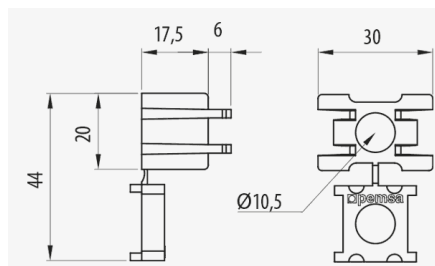
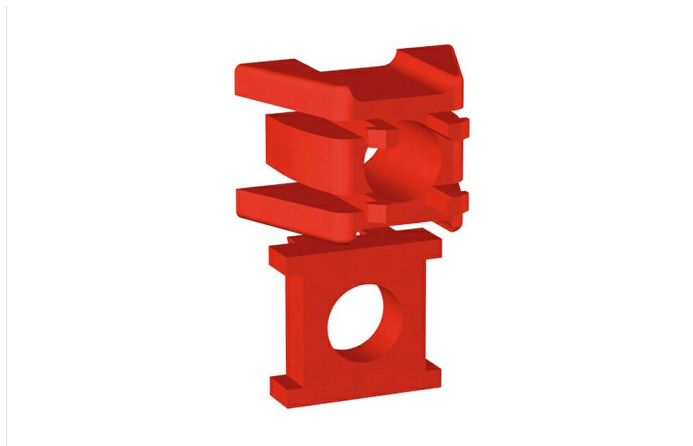


Omega SPLUS Plug



Description

Red plastic safety plug for SPLUS omega supports, SPLUS ceiling brackets and SPLUS suspensions. Its use provides greater security in the support of the wall or ceiling bracket.

Advantages

Maintains the shape of the omega profile when the support is installed on the wall.

It is provided free of charge with each support. Included with omega SPLUS, omega ceiling, suspensions and omega pendants.

Prevents the crushing of the bracket. It improves the assembly and prevents the rotation of the support.

CE conformity to directive 2014/35 / EU.

Made of red plastic.

Applications

Suitable for the improvement of the installation of omega SPLUS brackets for the support of cable trays in electrical installations and / or telecommunications.

Solutions






Omega SPLUS Plug

Main technical characteristics

ETIM
EC000475

Product data

COLOUR	REF	kg/u			
Red RAL 3000	62031085	0.006	50	Plastic	-15 / 90 °C

Protection System

- CU - Copper electroplated
- PG - Pregalvanised
- EZ - Electrogalvanised
- BC - Electrogalvanised Bichromate
- BK8 - High Resistance Coating
- GC - Hot Dip Galvanising
- INOX - Stainless Steel
- PT - Polyester Paint
- AL - Aluminum
- LN - Brass or Nickel-plated brass

Insulating materials

- PC+ABS - Halogen Free Polycarbonate + ABS
- PVC - Polyvinyl Chloride
- PP - Halogen Free Polypropylene
- PA6 - Halogen Free Polyamide 6
- PA12 - Halogen Free Polyamide 12
- PU - Polyurethane
- PE - Polyethylene
- NBR - NBR rubber
- PET - Thermoplastic Polyester
- TPV - Thermoplastic

