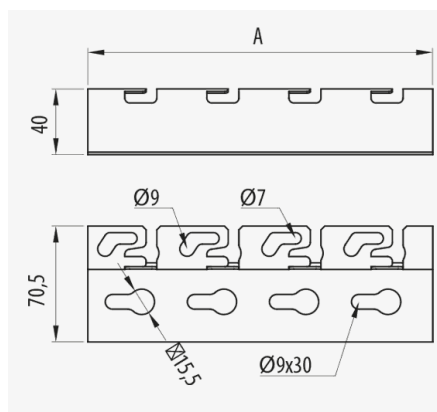
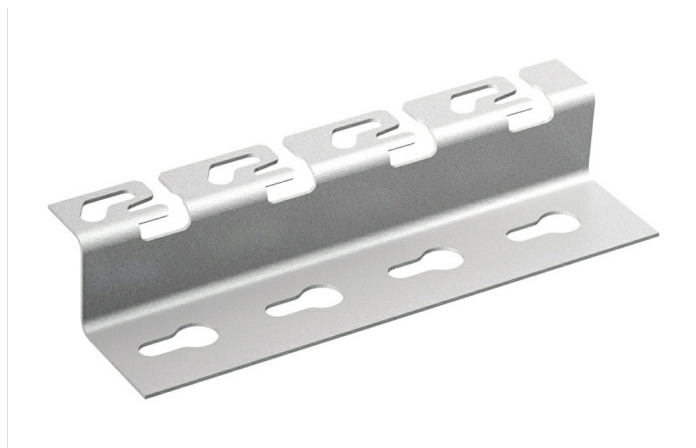


## Stand off Bracket Click



### Description

Metal support that allows the installation of Rejiband® and Pemsaband® trays to the floor or wall. The Click system, for quick connection of wire mesh trays, allows for installation at a height of 40 mm without the need of any fixings. Available in different sizes and Protection Systems.

### Advantages

Universal mounting system compatible with wire mesh trays by means of the Quick mount Click system without the need of screws or with sheet metal trays by using screws and the configuration of L-shaped M6/M8 holes.

Allows the installation of the tray at a distance of 40 mm from the wall or floor.

Facilitates handling and vertical installation of Rejiband wire mesh tray by positioning it in the click pin system.

### Applications

It is suitable for the installation of Rejiband® and Pemsaband trays and can be mounted vertically on a wall and is an efficient and simple solution as well in false floor installations.

### Solutions



INDUSTRIA ALIMENTARIA FOTOVOLTAICA



[www.pemsa-rejiband.com](http://www.pemsa-rejiband.com)

Any information included in this document is property of Pemsa®. It cannot be copied, total or partially, nor disclosed to third parties nor used without the explicit and written authorization by Pemsa®. These documents total or partially, can be subject to patent and/or be patent pending and therefore protected by intellectual and industrial property rights. Pemsa, Rejiband, Pemsaband, Inducanal, Rejitech, Megaband, Pemsaflex are registered trademarks property of "Pemsa Cable Management, S.A."



Main technical characteristics

 40	 100, 200, 300	 10	 250	 -50 / 150 °C	 A1 No combustible	ETIM EC000022
--	---	--	---	--	---	------------------

Product data

Ⓢ	Class 61537		Ref	kg/u	Ⓜ
PG	Class 3	100	67020520	0.111	Steel with surface coating
PG	Class 3	200	67020522	0.221	Steel with surface coating
PG	Class 3	300	67020524	0.331	Steel with surface coating
GC	Class 6	100	67030520	0.118	Steel with surface coating
GC	Class 6	200	67030522	0.237	Steel with surface coating
GC	Class 6	300	67030524	0.354	Steel with surface coating
INOX	Class 9C	100	67050520	0.121	Stainless steel AISI 304
INOX	Class 9C	200	67050522	0.228	Stainless steel AISI 304
INOX	Class 9C	300	67050524	0.335	Stainless steel AISI 304
INOX	Class 9D	100	67060520	0.121	Acero inoxidable AISI 316L
INOX	Class 9D	200	67060522	0.227	Acero inoxidable AISI 316L
INOX	Class 9D	300	67060524	0.333	Acero inoxidable AISI 316L

Ⓢ Protection System

- CU - Copper electroplated
- PG - Pregalvanised
- EZ - Electrogalvanised
- BC - Electrogalvanised Bichromate
- BK8 - High Resistance Coating
- GC - Hot Dip Galvanising
- INOX - Stainless Steel
- PT - Polyester Paint
- AL - Aluminum
- LN - Brass or Nickel-plated brass

Ⓜ Insulating materials

- PC+ABS - Halogen Free Polycarbonate + ABS
- PVC - Polyvinyl Chloride
- PP - Halogen Free Polypropylene
- PA6 - Halogen Free Polyamide 6
- PA12 - Halogen Free Polyamide 12
- PU - Polyurethane
- PE - Polyethylene
- NBR - NBR rubber
- PET - Thermoplastic Polyester
- TPV - Thermoplastic



Product applications

