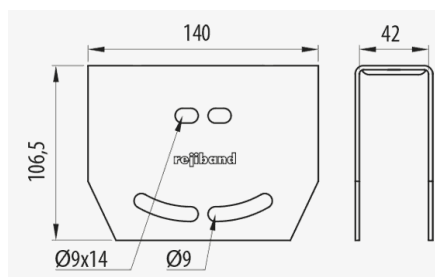
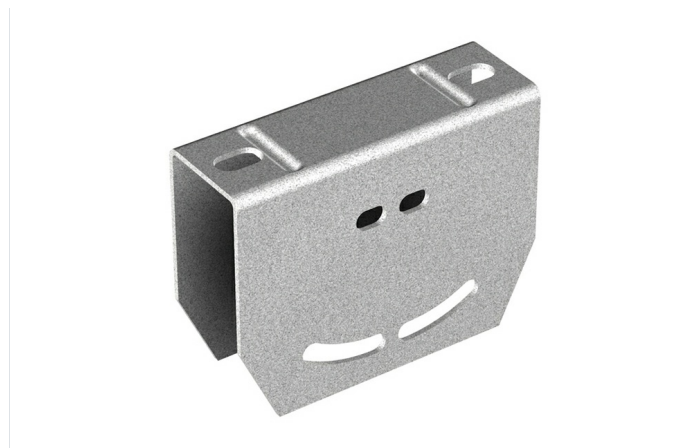


Heavy Duty Pendant Boss



Description

Metal pendant boss for connection to the reinforced pendulum channel for ceiling installations where an angle is required in respect of the vertical of the mounted Rejiband® wire mesh and Pemsaband® sheet metal trays. Made of steel and in various Protection Systems.

Advantages

It has holes that allow the connection of the heavy duty pendant channel at various angles of inclination.

Allows use for curved or perpendicular areas.

Pendant channel joint for a suspension on a curved ceiling.

CE conformity to directive 2014/35 / EU.

Available in PG and GC protection systems.

Applications

Suitable for supporting medium and high loads of cable trays to the ceiling by means of a variable angled rod for electrical installations and / or of telecommunications in: Civil works, tunnels, car parks, public buildings, commercial centres, large infrastructures such as: Airports, underground, rail, tertiary sector, industrial naval, petrochemical, textile, chemical and food applications.

Solutions



INDUSTRIA PETROQUÍMICA TUNELES. INFRAESTRUCTURAS



www.pemsa-rejiband.com




Any information included in this document is property of Pemsa®. It cannot be copied, total or partially, nor disclosed to third parties nor used without the explicit and written authorization by Pemsa®. These documents total or partially, can be subject to patent and/or be patent pending and therefore protected by intellectual and industrial property rights. Pemsa, Rejiband, Pemsaband, Inducanal, Rejitech, Megaband, Pemsaflex are registered trademarks property of "Pemsa Cable Management, S.A."



Main technical characteristics

 1	 Steel with surface coating	 -50 / 150 °C	 A1 No combustible	ETIM EC000082
---	--	--	---	------------------

Product data

	 Class 6	 Ref	kg/u
GC	Class 6	67030644	0.654
PG	Class 3	67030645	0.627

 Protection System

- CU - Copper electroplated
- PG - Pregalvanised
- EZ - Electrogalvanised
- BC - Electrogalvanised Bichromate
- BK8 - High Resistance Coating
- GC - Hot Dip Galvanising
- INOX - Stainless Steel
- PT - Polyester Paint
- AL - Aluminum
- LN - Brass or Nickel-plated brass

 Insulating materials

- PC+ABS - Halogen Free Polycarbonate + ABS
- PVC - Polyvinyl Chloride
- PP - Halogen Free Polypropylene
- PA6 - Halogen Free Polyamide 6
- PA12 - Halogen Free Polyamide 12
- PU - Polyurethane
- PE - Polyethylene
- NBR - NBR rubber
- PET - Thermoplastic Polyester
- TPV - Thermoplastic



Heavy Duty Pendant Boss

Product applications

