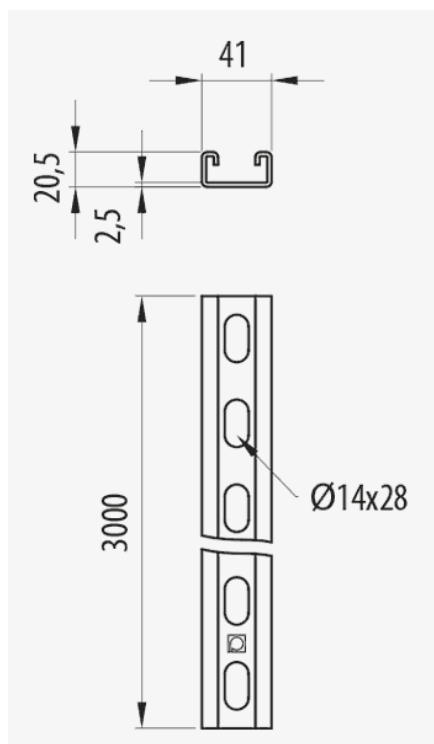
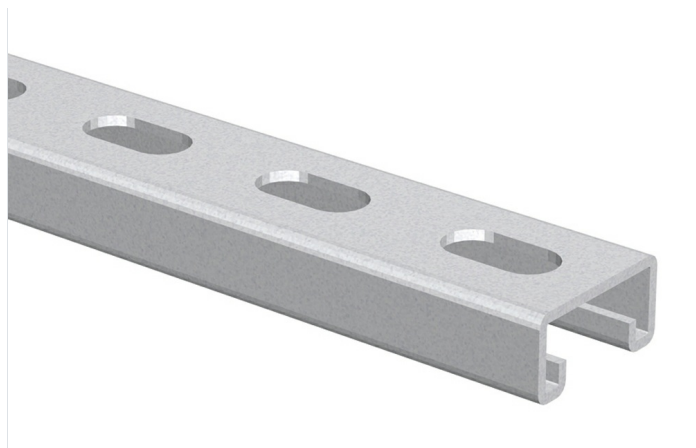


Heavy Duty Channel 41x21



Description

Heavy duty metal channel 41x21 mm and 2.5 mm thick for the support of Rejiband® wire mesh trays, Pemsaband® sheet trays and Megaband® ladder in cable management installations. It allows the construction of various types of suspended wall and support structures etc. Made of steel and with PG Protection System.

Advantages

Versatile way to simplify the installation of horizontal supports.

It facilitates ceiling installations, or other special assemblies, of sections of tray carrying heavy loads for cable management.

It has multiple holes that facilitate the connection possibilities.

CE conformity to directive 2014/35 / EU.

Available in several protection systems: PG, GC and AISI 316L stainless steel.

Applications

Suitable for the creation of support structures for indoor installations of Rejiband® and Pemsaband® trays and Megaband® ladder in electrical wiring and / or telecommunications in a dry atmosphere without contaminants.

Solutions



INDUSTRIA PETROQUÍMICA TUNELES. INFRAESTRUCTURAS





www.pemsa-rejiband.com

Any information included in this document is property of Pemsa®. It cannot be copied, total or partially, nor disclosed to third parties nor used without the explicit and written authorization by Pemsa®. These documents total or partially, can be subject to patent and/or be patent pending and therefore protected by intellectual and industrial property rights. Pemsa, Rejiband, Pemsaband, Inducanal, Rejitech, Megaband, Pemsaflex are registered trademarks property of "Pemsa Cable Management, S.A."

Heavy Duty Channel 41x21

Main technical characteristics

 21	 3	 3	 -50 / 150 °C	 A1 No combustible	ETIM EC000386
--	---	---	--	---	------------------

Product data

§	Class EC 61537	Ref	kg/u	Ⓜ	e _{mm}
PG	Class 3	67030052	1.820	Steel with surface coating	2.5
GC	Class 6	67030055	1.900	Steel with surface coating	2.5
INOX	Class 9C	67050055	1.450	Stainless steel AISI 304	2
INOX	Class 9D	67060055	1.450	Acero inoxidable AISI 316L	2

§ Protection System

- CU - Copper electroplated
- PG - Pregalvanised
- EZ - Electrogalvanised
- BC - Electrogalvanised Bichromate
- BK8 - High Resistance Coating
- GC - Hot Dip Galvanising
- INOX - Stainless Steel
- PT - Polyester Paint
- AL - Aluminum
- LN - Brass or Nickel-plated brass

Ⓜ Insulating materials

- PC+ABS - Halogen Free Polycarbonate + ABS
- PVC - Polyvinyl Chloride
- PP - Halogen Free Polypropylene
- PA6 - Halogen Free Polyamide 6
- PA12 - Halogen Free Polyamide 12
- PU - Polyurethane
- PE - Polyethylene
- NBR - NBR rubber
- PET - Thermoplastic Polyester
- TPV - Thermoplastic

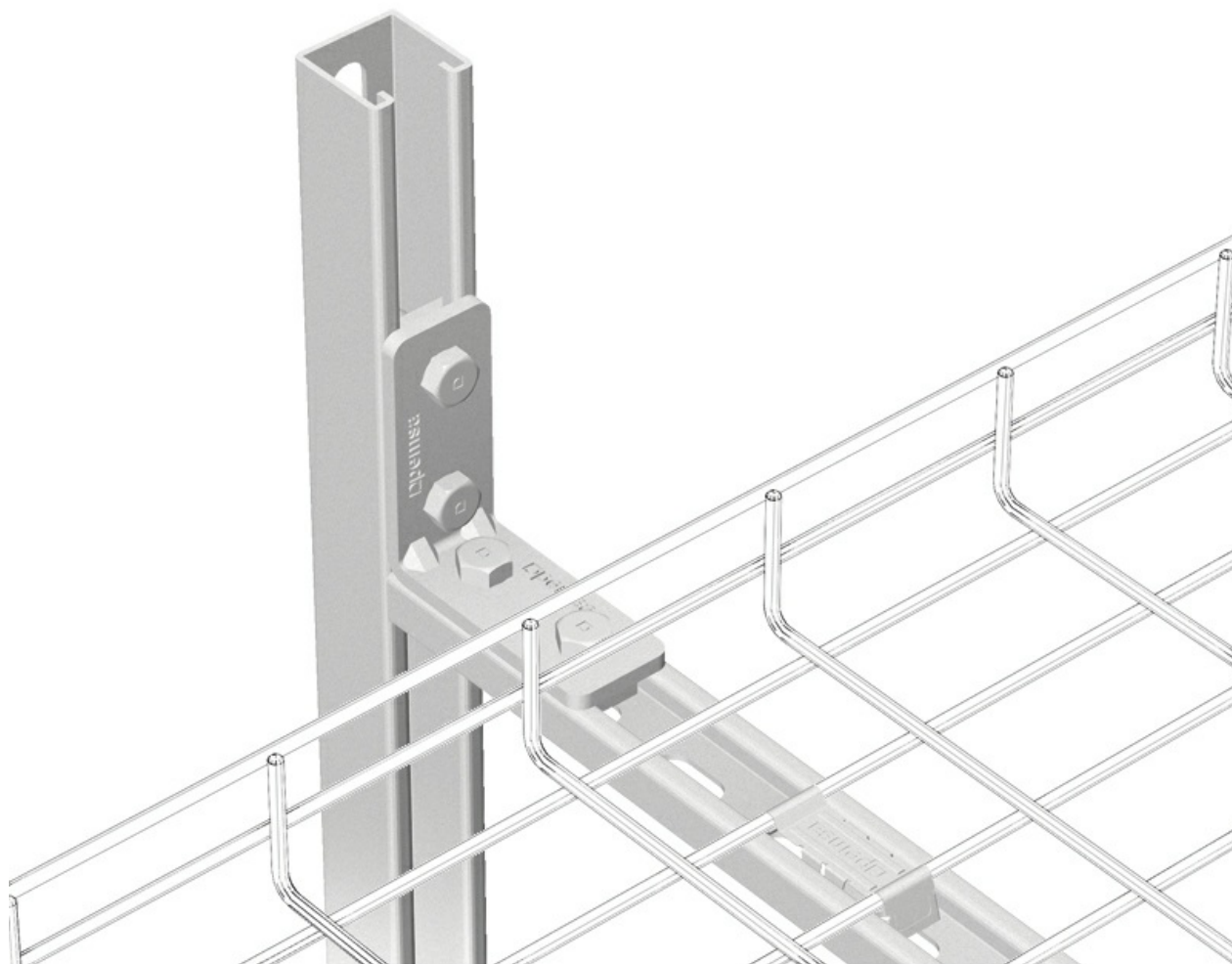


Heavy Duty Channel 41x21

Product applications



Heavy Duty Channel 41x21



Heavy Duty Channel 41x21

