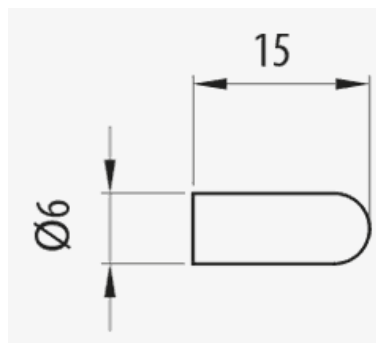


Wire End Cap



Description

Plastic cap in a black colour to protect the cut ends of the Rejiband® trays, thus avoiding damage to the installer and the cables within the installation.

Advantages

Fast assembly.

Economical and simple.

Made from black plastic.

Fitted simply by pushing on to the cut ends of the tray rods.

Protects the cables and the installer.

Applications

Use on the cut rods of the Rejiband® wire mesh tray in electrical or telecommunications wiring installations, to avoid damage and cuts to the cables and the installer.




Solutions



Main technical characteristics

ETIM
EC002935

Product data

COLOUR	Ref	kg/u			
Black RAL 9005	68000049	0.001	100	Plastic	-15 / 90 °C

Protection System

- CU - Copper electroplated
- PG - Pregalvanised
- EZ - Electrogalvanised
- BC - Electrogalvanised Bichromate
- BK8 - High Resistance Coating
- GC - Hot Dip Galvanising
- INOX - Stainless Steel
- PT - Polyester Paint
- AL - Aluminum
- LN - Brass or Nickel-plated brass

Insulating materials

- PC+ABS - Halogen Free Polycarbonate + ABS
- PVC - Polyvinyl Chloride
- PP - Halogen Free Polypropylene
- PA6 - Halogen Free Polyamide 6
- PA12 - Halogen Free Polyamide 12
- PU - Polyurethane
- PE - Polyethylene
- NBR - NBR rubber
- PET - Thermoplastic Polyester
- TPV - Thermoplastic

