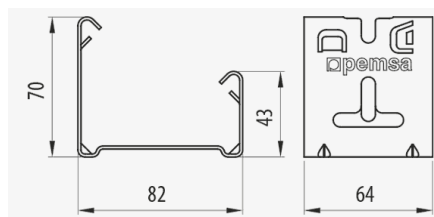
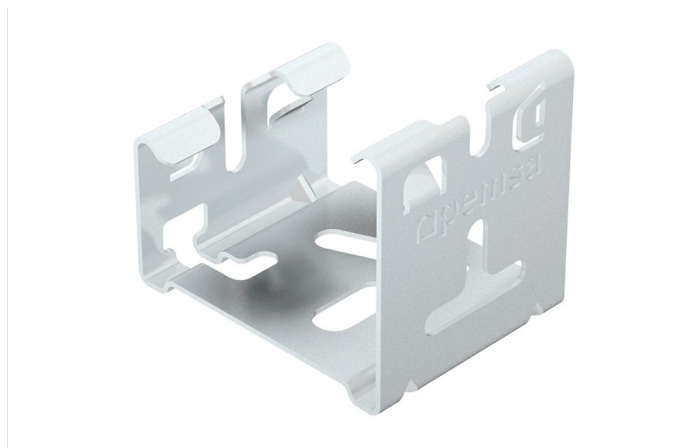


Luminaire and Box Support

1/5



Description

Support for the assembly of luminaires and/or boxes by means of the Click system for fast connection to the Rejiband® without the need of screws whilst maintaining the electrical continuity according to standard IEC61537. It is suitable for Rejiband® in depths of 35 and 60 mm and all widths except 60, 150 and 450 mm. Support is made of steel, in different Protection Systems.

Advantages

Fixing by quick click system.

Quick installation without the need for screws or fastenings.

For all tray widths except 60, 150 and 450 mm.

Available in various protection systems: EZ, BC, GC or high resistance BK8, depending on the type of application.

Applications

Suitable for the installation of luminaires, boxes or other devices on Rejiband wire mesh trays intended for the management of cables in electrical and telecommunications installations in public buildings, infrastructures and civil works, industrial installations and tertiary sector.

Solutions



www.pemsa-rejiband.com



Any information included in this document is property of Pemsa®. It cannot be copied, total or partially, nor disclosed to third parties nor used without the explicit and written authorization by Pemsa®. These documents total or partially, can be subject to patent and/or be patent pending and therefore protected by intellectual and industrial property rights. Pemsa, Rejiband, Pemsaband, Inducanal, Rejitech, Megaband, Pemsaflex are registered trademarks property of "Pemsa Cable Management, S.A."



Main technical characteristics

 10	 Steel with surface coating	 -50 / 150 °C	 A1 No combustible	ETIM EC002935
--	--	--	---	------------------

Product data

		Ref	kg/u
EZ	Class 3	67010030	0.142
BC	Class 5	67020030	0.142
GC	Class 8	67030030	0.146
BK8	Class 8	67080030	0.143

 Protection System

- CU** - Copper electroplated
- PG** - Pregalvanised
- EZ** - Electrogalvanised
- BC** - Electrogalvanised Bichromate
- BK8** - High Resistance Coating
- GC** - Hot Dip Galvanising
- INOX** - Stainless Steel
- PT** - Polyester Paint
- AL** - Aluminum
- LN** - Brass or Nickel-plated brass

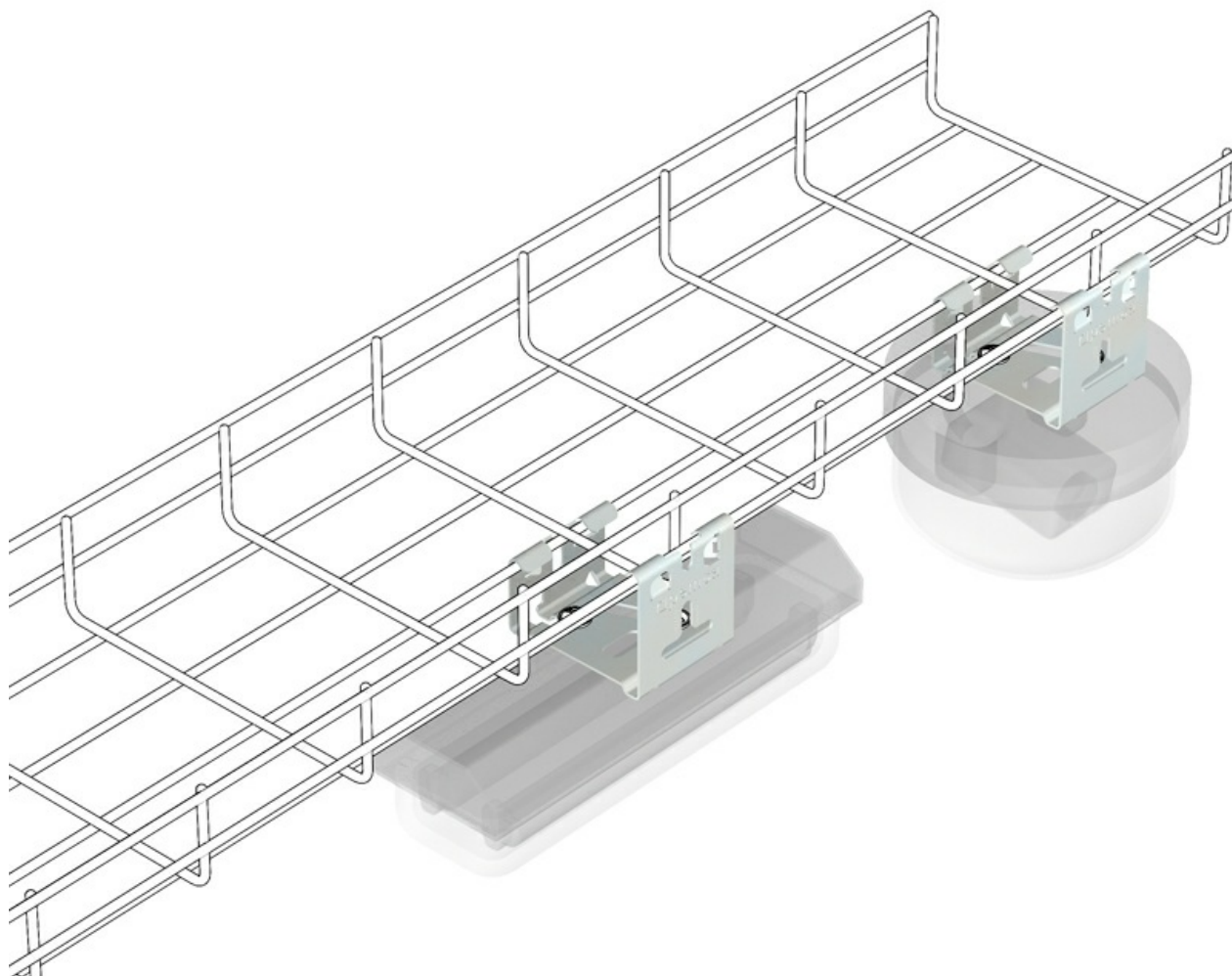
 Insulating materials

- PC+ABS** - Halogen Free Polycarbonate + ABS
- PVC** - Polyvinyl Chloride
- PP** - Halogen Free Polypropylene
- PA6** - Halogen Free Polyamide 6
- PA12** - Halogen Free Polyamide 12
- PU** - Polyurethane
- PE** - Polyethylene
- NBR** - NBR rubber
- PET** - Thermoplastic Polyester
- TPV** - Thermoplastic

Luminaire and Box Support

3/5

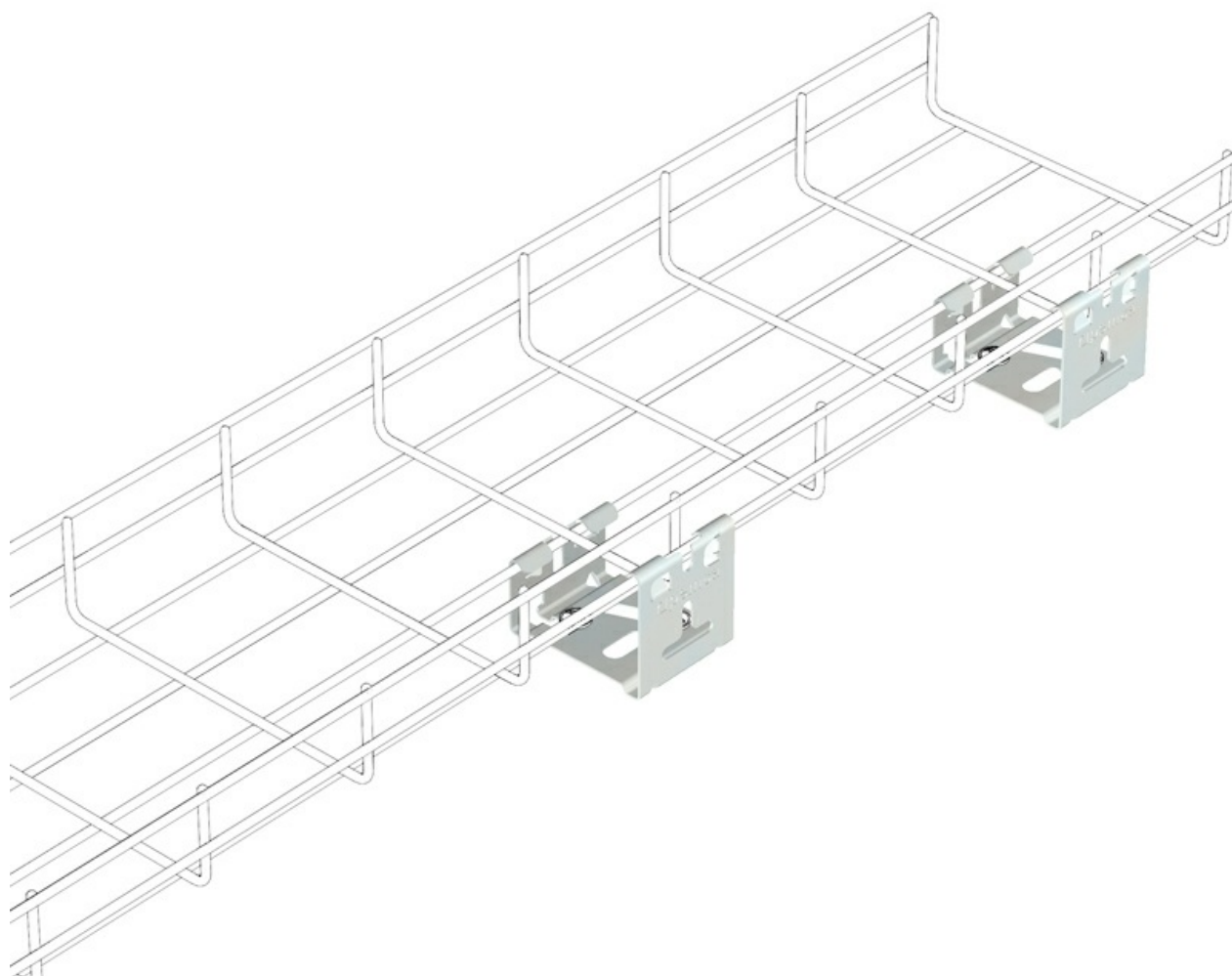
Product applications



www.pemsa-rejiband.com

Any information included in this document is property of Pemsa®. It cannot be copied, total or partially, nor disclosed to third parties nor used without the explicit and written authorization by Pemsa®. These documents total or partially, can be subject to patent and/or be patent pending and therefore protected by intellectual and industrial property rights. Pemsa, Rejiband, Pemsaband, Inducanal, Rejitech, Megaband, Pemsaflex are registered trademarks property of "Pemsa Cable Management, S.A."

Luminaire and Box Support



Luminaire and Box Support

