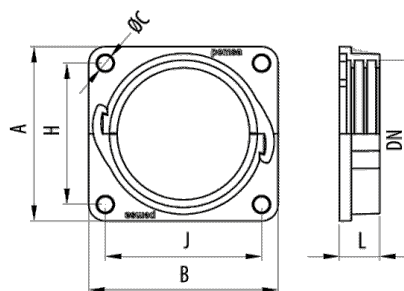


## Straight Connector



### Description

Straight connector with surface fixing ring made of self-extinguishing polyamide 6, halogen-free in grey RAL 7011 and black RAL 9005. Available in various diameters. Formed by two pieces and assembly is with the click system without the need for screws. It allows the rotation, but not any axial movement. Suitable for large diameter Macroflex® conduits.

### Advantages

Manufactured in polyamide 6. Self-extinguishing, halogen-free according to UNE/EN 60754-2 y UNE/EN 60754-1 and flame-retardant.

It has a fixing ring with four holes for attaching the conduit to a flat surface.

Formed by two pieces and assembly with click system without the need for screws. It allows the rotation, but not any axial movement.

Working temperature: -25°C to + 105°C. Degree of protection IP54 according to classification EN60529.

CE conformity to the 2014/35 directive and the IEC 61386 standard.









### Applications

Suitable for fixing large diameter Pemsaflex® and Macroflex® conduits for the protection of wiring and conductors in electrical installations of machines, tools, industrial equipment, robots, vehicles and special installations.

### Solutions



Main technical characteristics

 <b>COLOUR</b> Grey RAL 7011, Black RAL 9005	 <b>DN</b> NW52, NW70, NW95	 <b>C<sub>mm</sub></b> 6.5	 10	 <b>Poyamide 6</b>	 <b>IP54</b>	 <b>-25 / 105 °C</b>
 <b>LIBRE DE HALÓGENOS,NO PROPAGADOR DE LA LLAMA</b>		<b>ETIM</b> EC001176				

Product data

COLOUR	DN	L <sub>(mm)</sub>	A <sub>(mm)</sub>	B <sub>(mm)</sub>	H <sub>(mm)</sub>	J <sub>(mm)</sub>	Ref	kg/u
Grey RAL 7011	NW52	17	74	77	60	66	33010052	0.023
Grey RAL 7011	NW70	21	103	103	61	81	33010070	0.024
Grey RAL 7011	NW95	28	130	130	74	109	33010095	0.044
Black RAL 9005	NW52	17	74	77	60	66	33050052	0.023
Black RAL 9005	NW70	21	103	103	61	81	33050070	0.024
Black RAL 9005	NW95	28	130	130	74	109	33050095	0.026

Protection System

- CU** - Copper electroplated
- PG** - Pregalvanised
- EZ** - Electrogalvanised
- BC** - Electrogalvanised Bichromate
- BK8** - High Resistance Coating
- GC** - Hot Dip Galvanising
- INOX** - Stainless Steel
- PT** - Polyester Paint
- AL** - Aluminum
- LN** - Brass or Nickel-plated brass

Insulating materials

- PC+ABS** - Halogen Free Polycarbonate + ABS
- PVC** - Polyvinyl Chloride
- PP** - Halogen Free Polypropylene
- PA6** - Halogen Free Polyamide 6
- PA12** - Halogen Free Polyamide 12
- PU** - Polyurethane
- PE** - Polyethylene
- NBR** - NBR rubber
- PET** - Thermoplastic Polyester
- TPV** - Thermoplastic