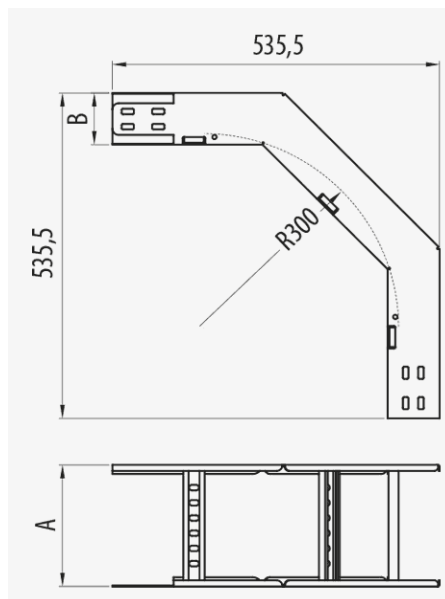
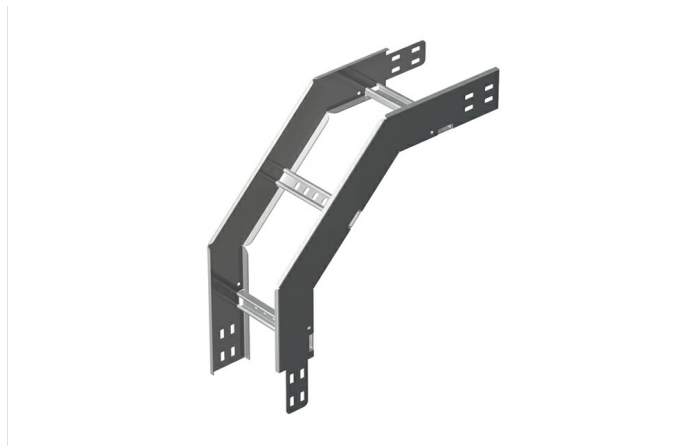


90° Outside Riser MEGAband (Ref: 93635300)



Description

Metal accessory for the creation of an outside riser in the wiring installation with the Megaband® ladder. Of 120 mm height, Width 300 mm, With GC protection system, HDG finish. It allows to make drops and changes of angle at 90° with great ease. Quick connection assembly using the click system. Made of steel, in various sizes and Protection Systems. Bending radius 300 mm. Check availability of 600 mm radius.

Advantages

Curved safety edge which offers maximum protection.

Connection to ladder by rapid assembly Click system. Only the Megaband® M8 joint kit or M8 nuts and bolts required

Available in various protection systems: EZ, GC and stainless steel AISI 304 and AISI 316L.

Electrical continuity guaranteed according to standard IEC61537.

Its design allows to make drops and changes of height with ease.

Applications

Suitable for level changes in cable management in Megaband® ladders in electrical and telecommunications installations in public buildings, infrastructures and civil works, industrial facilities, tertiary sector.

Solutions



Product data			
Protection System	GC	kg/u	3.461
Finish	HDG, Hot Dip Galvanised	u	1
Resistance Class	Class 6	Material	Steel with surface coating
Flange (mm)	120	Impact Strength (J)	20 J
Width (mm)	300	Working temperature range (°C)	-50 / 150 °C
R stat. (mm)	300	Fire resistance	A1 No combustible

Protection System

CU - Copper electroplated

PG - Pregalvanised

EZ - Electrogalvanised

BC - Electrogalvanised Bichromate

BK8 - High Resistance Coating

GC - Hot Dip Galvanising

INOX - Stainless Steel

PT - Polyester Paint

AL - Aluminum

LN - Brass or Nickel-plated brass

Insulating materials

PC+ABS - Halogen Free Polycarbonate + ABS

PVC - Polyvinyl Chloride

PP - Halogen Free Polypropylene

PA6 - Halogen Free Polyamide 6

PA12 - Halogen Free Polyamide 12

PU - Polyurethane

PE - Polyethylene

NBR - NBR rubber

PET - Thermoplastic Polyester

TPV - Thermoplastic

Product applications



