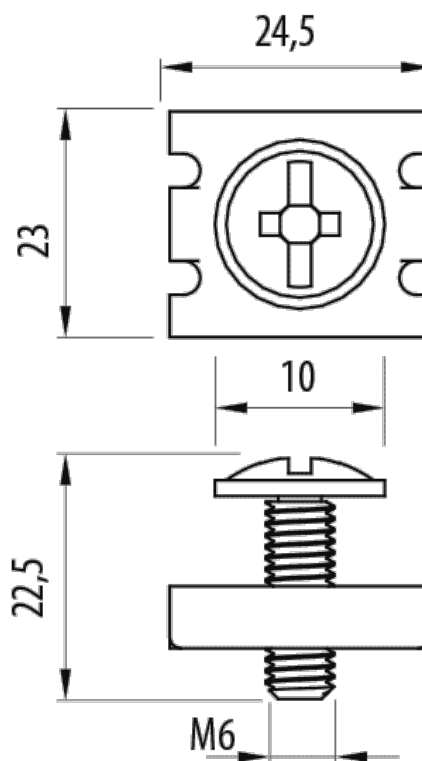
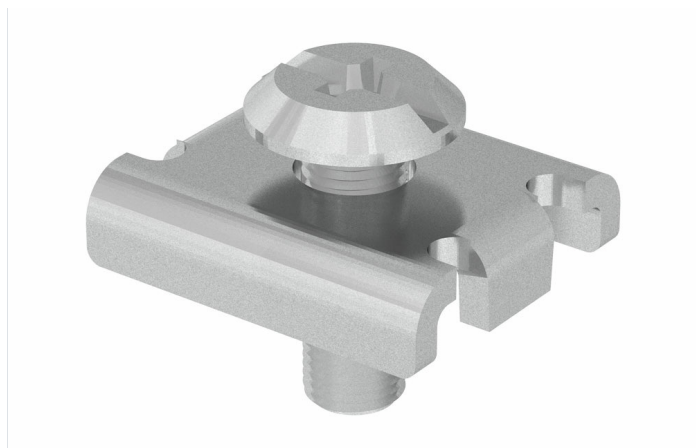


Part Clamp 60x60-2 (Ref: 64030058)



Description

M6x18 fixing kit for connecting the Rejiband® 60x60 mm grid tray with double wire on the base. With GC protection system, ZNI finish. Formed by two pieces of a Phillips head bolt and plate that fits over the rods. Manufactured in Steel and available in various Protection Systems.

Advantages

Wide range of protection systems: EZ, BC, GC, BK8 and stainless steel AISI 304 and AISI 316L.

Conforms to IEC 61537 and CE Conformity to Directive 2014/35/EU.

The screw is separate to the plate allowing direct manipulation with a tool and easy installation.

Easy connection on 41x21 mm and 41x41 mm channels by using an additional M6 channel nut.

The shape of the plate fits precisely on the double rod at the base of the tray. Maximum resistance.

Applications

Suitable for the connection of Rejiband® trays of 60x60 mm with double rod in the base directly on to a base or facing or directly to 41x21 mm or 41x41 mm channel for the routing, transport and distribution of cables in electrical installations and / or telecommunications in civil works, tunnels, car parks, public buildings, shopping centers, data processing centers, large infrastructures, airports, subway lines, trains, tertiary sector and industrial applications.

Solutions



Product data			
Protection System	GC	kg/u	0.014
Finish	Zinc Nickel	u	25
Resistance Class	Class 8	Material	Steel with surface coating
M/PG	M 6	Working temperature range (°C)	-50 / 150 °C
G (mm)	18	Fire resistance	A1 No combustible

Protection System

CU - Copper electroplated

PG - Pregalvanised

EZ - Electrogalvanised

BC - Electrogalvanised Bichromate

BK8 - High Resistance Coating

GC - Hot Dip Galvanising

INOX - Stainless Steel

PT - Polyester Paint

AL - Aluminum

LN - Brass or Nickel-plated brass

Insulating materials

- PC+ABS** - Halogen Free Polycarbonate + ABS
- PVC** - Polyvinyl Chloride
- PP** - Halogen Free Polypropylene
- PA6** - Halogen Free Polyamide 6
- PA12** - Halogen Free Polyamide 12
- PU** - Polyurethane
- PE** - Polyethylene
- NBR** - NBR rubber
- PET** - Thermoplastic Polyester
- TPV** - Thermoplastic