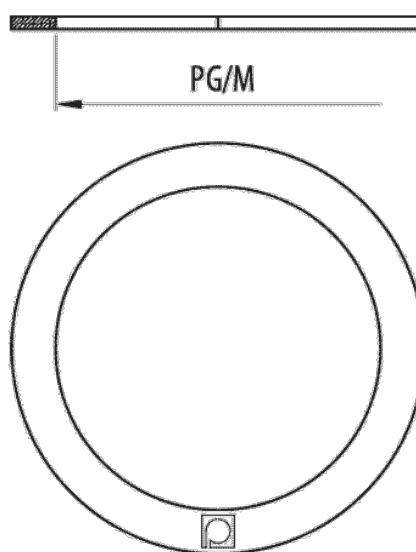
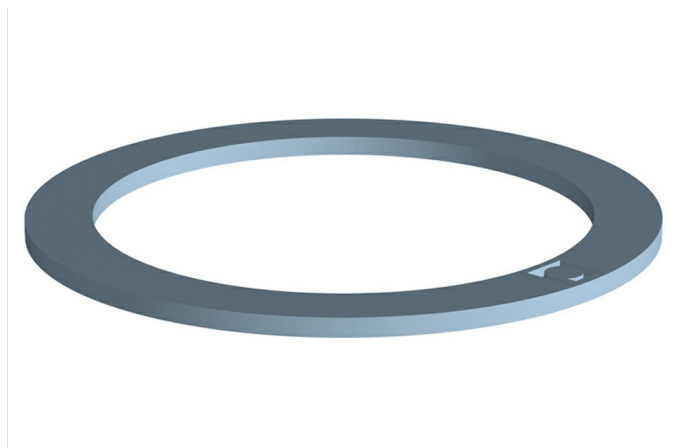


Flat Ring (Ref: 39092007)

1/2



Description

Flat ring of NBR elastomer in blue colour, metric and PG thread for use with external threaded fittings and cable glands to provide an IP67 protection index to the joint. Available in various sizes.

Advantages

CE conformity to the 2014/35 directive and the IEC 61386 standard.

Available in blue.

Available in metric thread: M12, M16, M20, M25, M32, M40 M50 and M63 and PG thread: 7, 9, 11, 13.5, 16, 21, 29, 36 and 48.

Manufactured in NBR elastomer.

Improves the seal of the fitting or cable gland on the box, reaching IP67.

Applications

Suitable for use on an external thread to improve the tightness of the joint with the boxes. Can be used for any range of fittings, conduits or cable glands.

Solutions



www.pemsa-rejiband.com



Any information included in this document is property of Pemsa®. It cannot be copied, total or partially, nor disclosed to third parties nor used without the explicit and written authorization by Pemsa®. These documents total or partially, can be subject to patent and/or be patent pending and therefore protected by intellectual and industrial property rights. Pemsa, Rejiband, Pemsaband, Inducanal, Rejitech, Megaband, Pemsaflex are registered trademarks property of "Pemsa Cable Management, S.A."

Product data			
Colour	Blue RAL 5024	Material	NBR
M/PG	PG 7	IP	IP67
kg/u	0.000	Working temperature range (°C)	-25 / 105 °C
u	100	Fire resistance	Flame retardant

Protection System
CU - Copper electroplated
PG - Pregalvanised
EZ - Electrogalvanised
BC - Electrogalvanised Bichromate
BK8 - High Resistance Coating
GC - Hot Dip Galvanising
INOX - Stainless Steel
PT - Polyester Paint
AL - Aluminum
LN - Brass or Nickel-plated brass

Insulating materials
PC+ABS - Halogen Free Polycarbonate + ABS
PVC - Polyvinyl Chloride
PP - Halogen Free Polypropylene
PA6 - Halogen Free Polyamide 6
PA12 - Halogen Free Polyamide 12
PU - Polyurethane
PE - Polyethylene
NBR - NBR rubber
PET - Thermoplastic Polyester
TPV - Thermoplastic