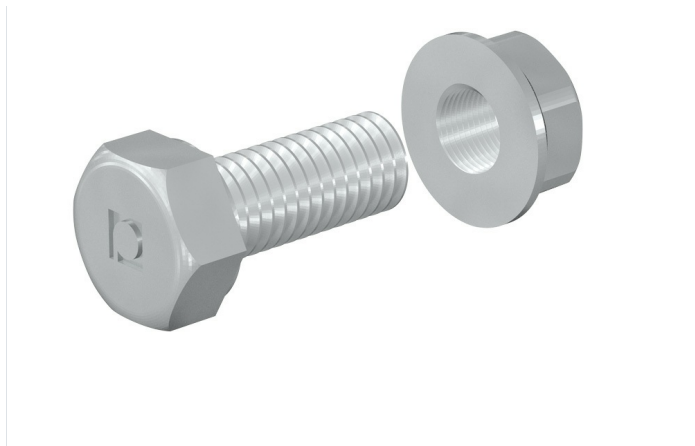


Joint Kit



Description

Joint kit for connecting ladder and accessories. Consists of M8x20 hexagonal head bolt and M8 metal nut for Megaband® Marine ladder installations, maintaining electrical continuity according to IEC 61537. Suitable for all ladder sizes. Available in various protection systems.

Advantages

It allows the coupling of straight sections and accessories of Megaband® Marine together the straight coupler

Coupling kit consisting of screw and nut with steel washer, made of steel and available in various protection systems.

CE certified in compliance with the low voltage directive 2014/35 / EU

SAFECu Protection system, copper-plated treatment, which confers hygienic properties by eliminating bacteria, viruses and fungi

Applications

Adecuada para ubicarse en espacios reducido. Canalización, Protección y distribución de cables en Instalaciones eléctricas en Industria Naval, Buques, Plataformas Offshore, Puertos, Aplicaciones marítimas,

Solutions











www.pemsa-rejiband.com

Any information included in this document is property of Pemsa®. It cannot be copied, total or partially, nor disclosed to third parties nor used without the explicit and written authorization by Pemsa®. These documents total or partially, can be subject to patent and/or be patent pending and therefore protected by intellectual and industrial property rights. Pemsa, Rejiband, Pemsaband, Inducanal, Rejitech, Megaband, Pemsaflex are registered trademarks property of "Pemsa Cable Management, S.A."

Main technical characteristics

ETIM

Product data

				REF	kg/u				
GC	Class 8	M 8	20	67030094	0.018	100	Steel with surface coating	-50 / 150 °C	A1 No combustible

Protection System

CU - Copper electroplated

PG - Pregalvanised

EZ - Electrogalvanised

BC - Electrogalvanised Bichromate

BK8 - High Resistance Coating

GC - Hot Dip Galvanising

INOX - Stainless Steel

PT - Polyester Paint

AL - Aluminum

LN - Brass or Nickel-plated brass

Insulating materials

PC+ABS - Halogen Free Polycarbonate + ABS

PVC - Polyvinyl Chloride

PP - Halogen Free Polypropylene

PA6 - Halogen Free Polyamide 6

PA12 - Halogen Free Polyamide 12

PU - Polyurethane

PE - Polyethylene

NBR - NBR rubber

PET - Thermoplastic Polyester

TPV - Thermoplastic

