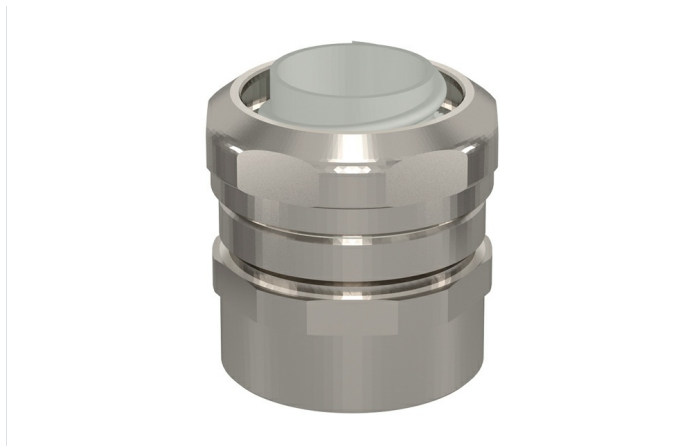


**RMH Female Connector** ( Ref: 37041201 )



**Description**

Nickel-plated brass connector with internal thread and polyethylene inner sleeve for the assembly of TM, Ecoflex®, TM-PVC conduits. IP54 protection index. Available in various sizes and in metric threads.

**Advantages**

CE conformity to the 2014/35 directive and the IEC 61386 standard.

It has an internal female thread to allow the connection of RM external threads for joining lengths of flexible conduits.

Made of nickel-plated brass with a polypropylene inner sleeve.

Protection index EN 60529: IP54.

Working temperature: -25°C to + 90°C.

**Applications**

Suitable for the connection of TM, TM-PVC and Ecoflex® metallic flexible conduits, in the management of electrical cables for building, tertiary and industrial applications.

**Solutions**



Product data			
Protection System	LTN	Torque wrench	26
Finish	Nickel-plated brass	kg/u	0.030
DN	NW13	u	50
M/PG	M20	Material	LATÓN NIQUELADO,POLIPROPILENO
G (mm)	8	IP	IP54
Ø d1 (mm)	13.6	Working temperature range (°C)	-25 / 90 °C
L (mm)	29.1	Fire resistance	LIBRE DE HALÓGENOS,NO PROPAGADOR DE LA LLAMA

Protection System
CU - Copper electroplated
PG - Pregalvanised
EZ - Electrogalvanised
BC - Electrogalvanised Bichromate
BK8 - High Resistance Coating
GC - Hot Dip Galvanising
INOX - Stainless Steel
PT - Polyester Paint
AL - Aluminum
LN - Brass or Nickel-plated brass

Insulating materials
PC+ABS - Halogen Free Polycarbonate + ABS
PVC - Polyvinyl Chloride
PP - Halogen Free Polypropylene
PA6 - Halogen Free Polyamide 6
PA12 - Halogen Free Polyamide 12
PU - Polyurethane
PE - Polyethylene
NBR - NBR rubber
PET - Thermoplastic Polyester
TPV - Thermoplastic