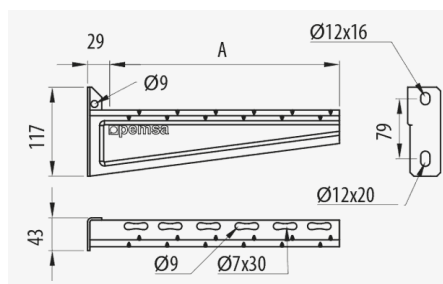
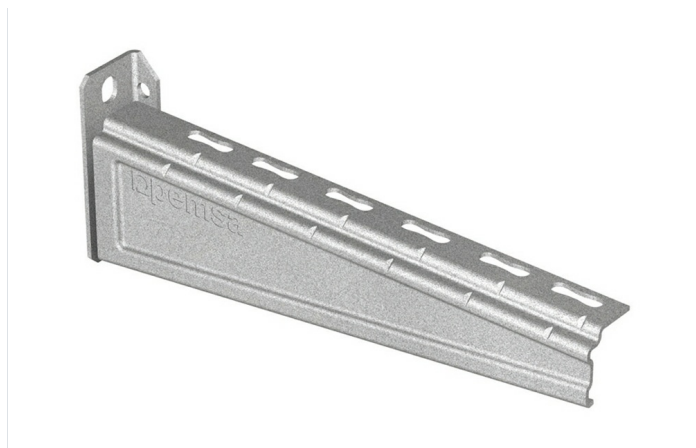


Heavy Duty Cantilever RPLUS (Ref: 63033303)

1/5



Description

Heavy duty reinforced support for the mounting on the wall, channel or ceiling mounted pendants of ladder, wire mesh and sheet trays. Width 300 mm. Recommended for very high loads. Available in widths of 300, 400, 500 and 600 mm. Made of steel and GC Protection System.

Advantages

GC protection system (standard UNE-EN ISO 1461), suitable for outdoor installations and in aggressive environments. Corrosion resistance class 6.

Suitable for supporting heavy duty loads in industrial intallations and environments.

N Mark of Aenor, in accordance with IEC 61537 and CE conformity to Directive 2014/35 / EU. Fire resistance E90 according to DIN 4102-12.

Structural reinforcement, which reduces the twisting and increases the load capacity.

Universal mounting system compatible with Rejiband® wire mesh trays, Pemsaband® sheet trays and Megaband® ladder. A single support for all trays and ladder. Reduction in the number of references.

Applications

Suitable for supporting high loads of cable trays for electrical installations and / or of telecommunications in: Civil works, tunnels, car parks, public buildings, commercial centres, large infrastructures such as: Airports, underground, rail, tertiary sector, industrial naval, petrochemical, textile, chemical and food applications, according to the finish.

Solutions



INDUSTRIA PETROQUÍMICA



www.pemsa-rejiband.com

Any information included in this document is property of Pemsa®. It cannot be copied, total or partially, nor disclosed to third parties nor used without the explicit and written authorization by Pemsa®. These documents total or partially, can be subject to patent and/or be patent pending and therefore protected by intellectual and industrial property rights. Pemsa, Rejiband, Pemsaband, Inducanal, Rejitech, Megaband, Pemsaflex are registered trademarks property of "Pemsa Cable Management, S.A."



Product data			
Protection System	GC	u	4
Finish	HDG, Hot Dip Galvanised	Material	Steel with surface coating
Resistance Class	Class 6	SWL (kg)	220
Width (mm)	300	Working temperature range (°C)	-50 / 150 °C
kg/u	0.763	Fire resistance	E90 (90 min. 1000°C)

Protection System

CU - Copper electroplated

PG - Pregalvanised

EZ - Electrogalvanised

BC - Electrogalvanised Bichromate

BK8 - High Resistance Coating

GC - Hot Dip Galvanising

INOX - Stainless Steel

PT - Polyester Paint

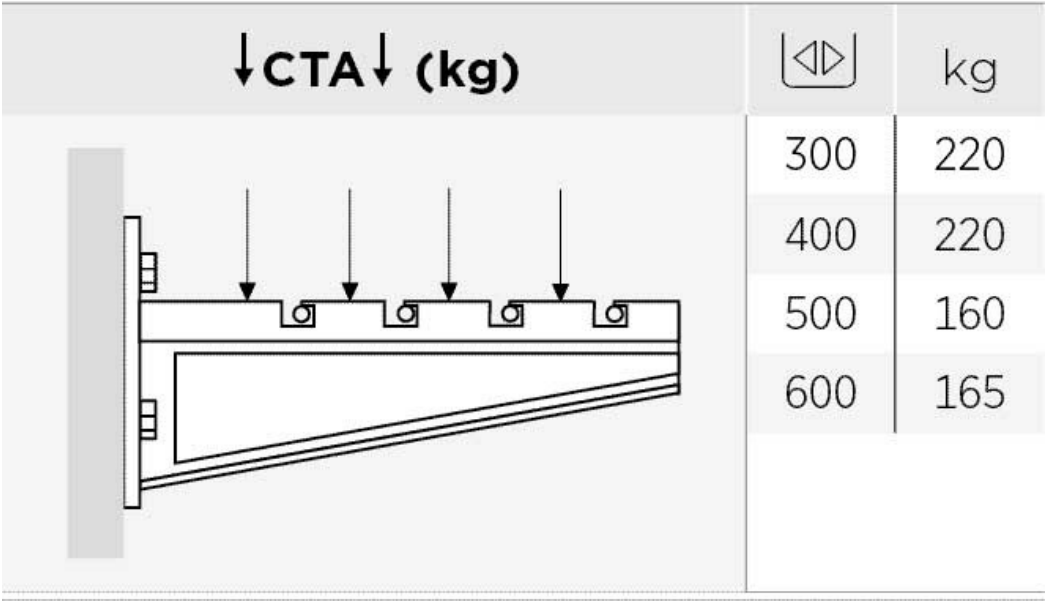
AL - Aluminum

LN - Brass or Nickel-plated brass

Insulating materials

- PC+ABS** - Halogen Free Polycarbonate + ABS
- PVC** - Polyvinyl Chloride
- PP** - Halogen Free Polypropylene
- PA6** - Halogen Free Polyamide 6
- PA12** - Halogen Free Polyamide 12
- PU** - Polyurethane
- PE** - Polyethylene
- NBR** - NBR rubber
- PET** - Thermoplastic Polyester
- TPV** - Thermoplastic

Load diagrams



Product applications

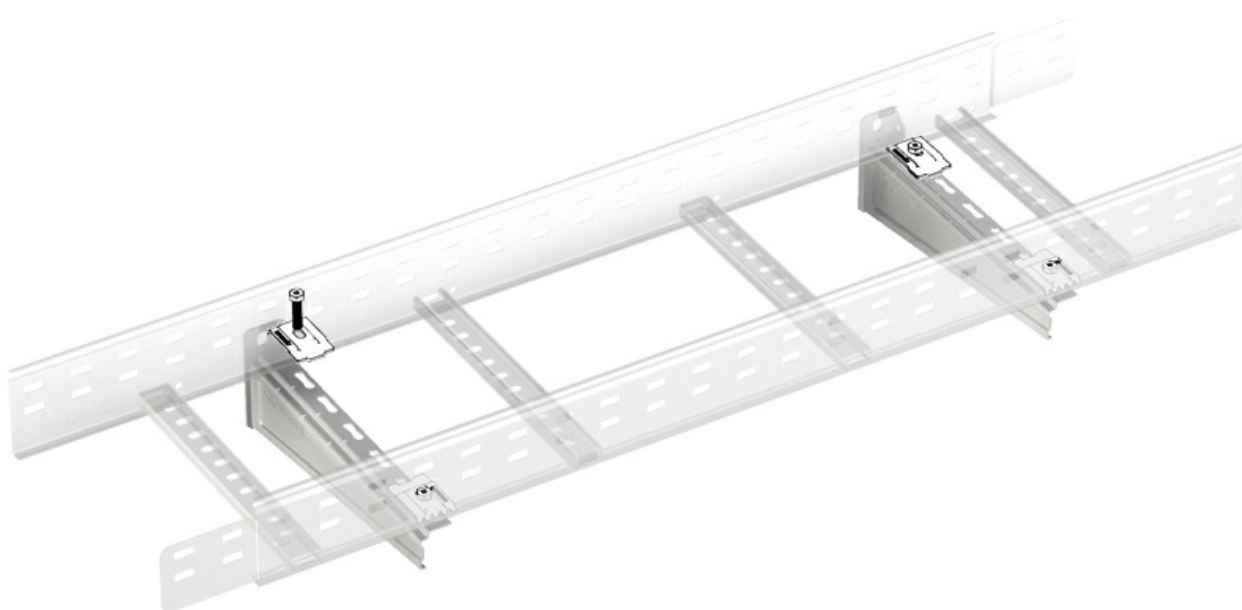


www.pemsa-rejiband.com

Any information included in this document is property of Pemsa®. It cannot be copied, total or partially, nor disclosed to third parties nor used without the explicit and written authorization by Pemsa®. These documents total or partially, can be subject to patent and/or be patent pending and therefore protected by intellectual and industrial property rights. Pemsa, Rejiband, Pemsaband, Inducanal, Rejitech, Megaband, Pemsaflex are registered trademarks property of "Pemsa Cable Management, S.A."



Heavy Duty Cantilever RPLUS (Ref: 63033303)



Heavy Duty Cantilever RPLUS (Ref: 63033303)

