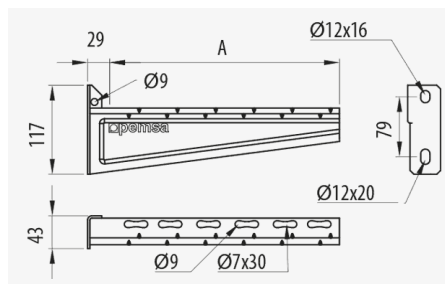
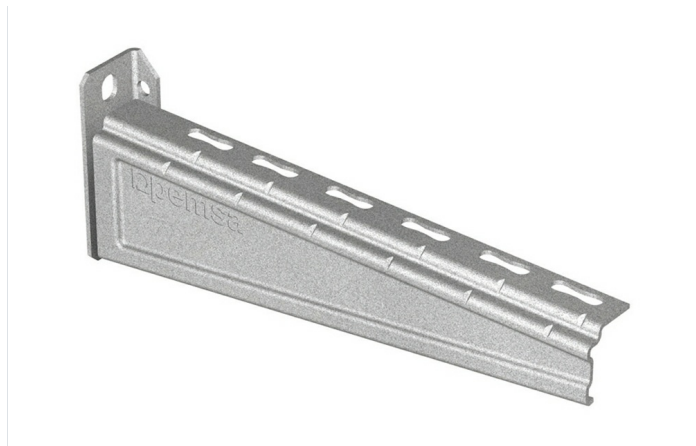


## Heavy Duty Cantilever RPLUS ( Ref: 63033603 )

1/5



### Description

Heavy duty reinforced support for the mounting on the wall, channel or ceiling mounted pendants of ladder, wire mesh and sheet trays. Width 600 mm. Recommended for very high loads. Available in widths of 300, 400, 500 and 600 mm. Made of steel and GC Protection System.

### Advantages

GC protection system (standard UNE-EN ISO 1461), suitable for outdoor installations and in aggressive environments. Corrosion resistance class 6.

Suitable for supporting heavy duty loads in industrial intallations and environments.

N Mark of Aenor, in accordance with IEC 61537 and CE conformity to Directive 2014/35 / EU. Fire resistance E90 according to DIN 4102-12.

Structural reinforcement, which reduces the twisting and increases the load capacity.

Universal mounting system compatible with Rejiband® wire mesh trays, Pemsaband® sheet trays and Megaband® ladder. A single support for all trays and ladder. Reduction in the number of references.

### Applications

Suitable for supporting high loads of cable trays for electrical installations and / or of telecommunications in: Civil works, tunnels, car parks, public buildings, commercial centres, large infrastructures such as: Airports, underground, rail, tertiary sector, industrial naval, petrochemical, textile, chemical and food applications, according to the finish.

### Solutions



INDUSTRIA PETROQUÍMICA



[www.pemsa-rejiband.com](http://www.pemsa-rejiband.com)

Any information included in this document is property of Pemsa®. It cannot be copied, total or partially, nor disclosed to third parties nor used without the explicit and written authorization by Pemsa®. These documents total or partially, can be subject to patent and/or be patent pending and therefore protected by intellectual and industrial property rights. Pemsa, Rejiband, Pemsaband, Inducanal, Rejitech, Megaband, Pemsaflex are registered trademarks property of "Pemsa Cable Management, S.A."



Heavy Duty Cantilever RPLUS ( Ref: 63033603 )

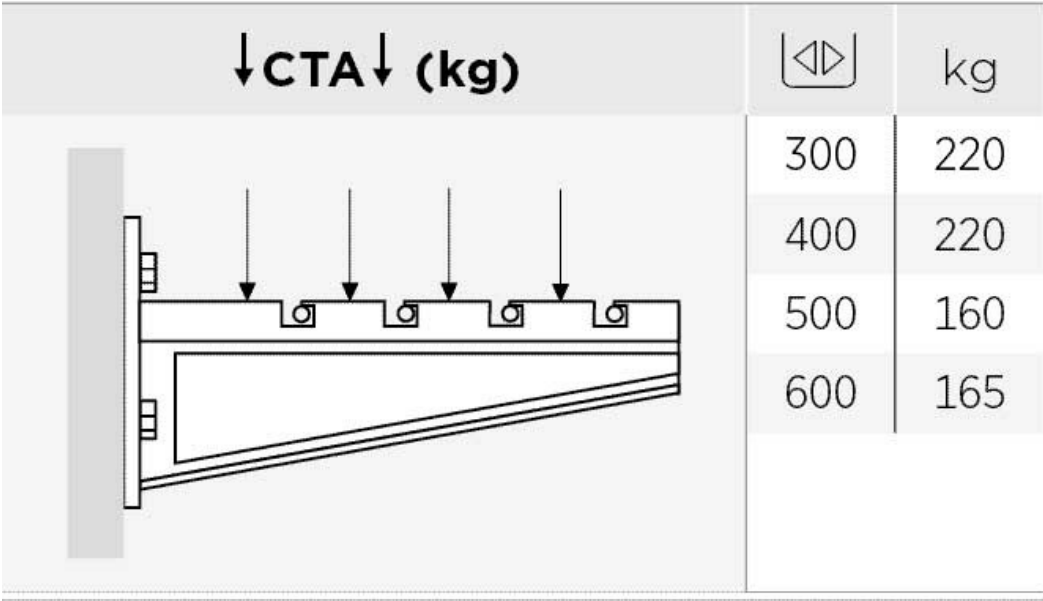
Product data			
Protection System	GC	u	4
Finish	HDG, Hot Dip Galvanised	Material	Steel with surface coating
Resistance Class	Class 6	SWL (kg)	165
Width (mm)	600	Working temperature range (°C)	-50 / 150 °C
kg/u	1.352	Fire resistance	E90 (90 min. 1000°C)

Protection System
CU - Copper electroplated
PG - Pregalvanised
EZ - Electrogalvanised
BC - Electrogalvanised Bichromate
BK8 - High Resistance Coating
GC - Hot Dip Galvanising
INOX - Stainless Steel
PT - Polyester Paint
AL - Aluminum
LN - Brass or Nickel-plated brass
Insulating materials
PC+ABS - Halogen Free Polycarbonate + ABS
PVC - Polyvinyl Chloride
PP - Halogen Free Polypropylene
PA6 - Halogen Free Polyamide 6
PA12 - Halogen Free Polyamide 12
PU - Polyurethane
PE - Polyethylene
NBR - NBR rubber
PET - Thermoplastic Polyester
TPV - Thermoplastic



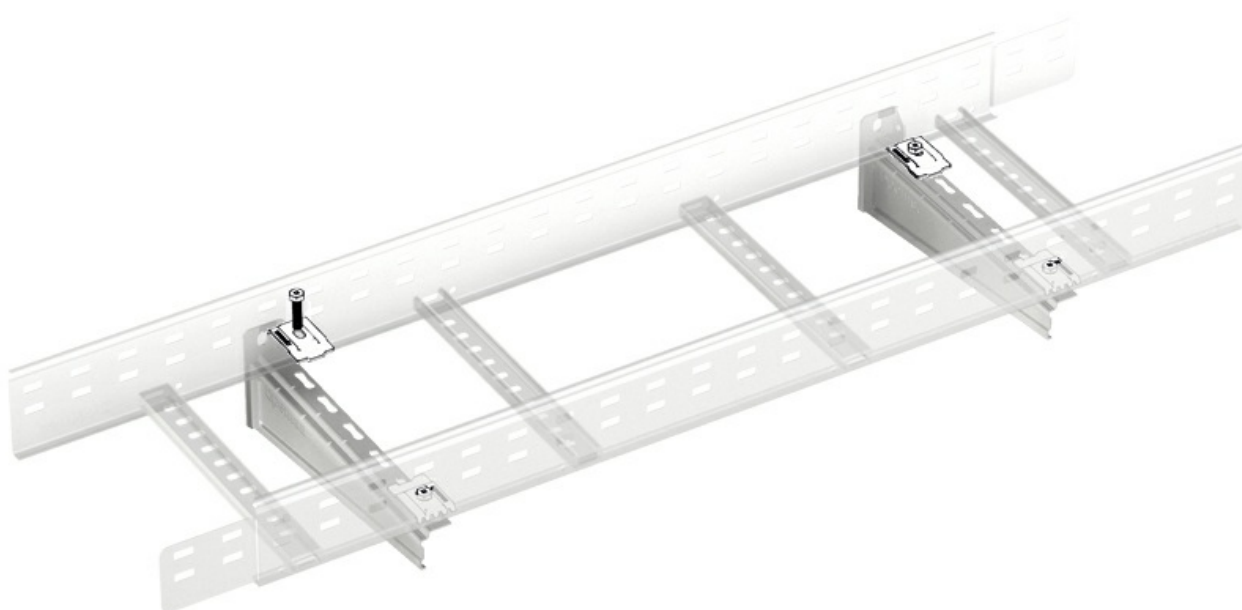
Heavy Duty Cantilever RPLUS ( Ref: 63033603 )

Load diagrams



Product applications

**Heavy Duty Cantilever RPLUS** ( Ref: 63033603 )



**Heavy Duty Cantilever RPLUS** ( Ref: 63033603 )

