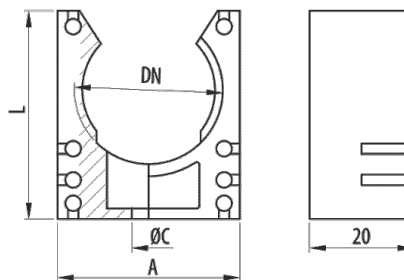
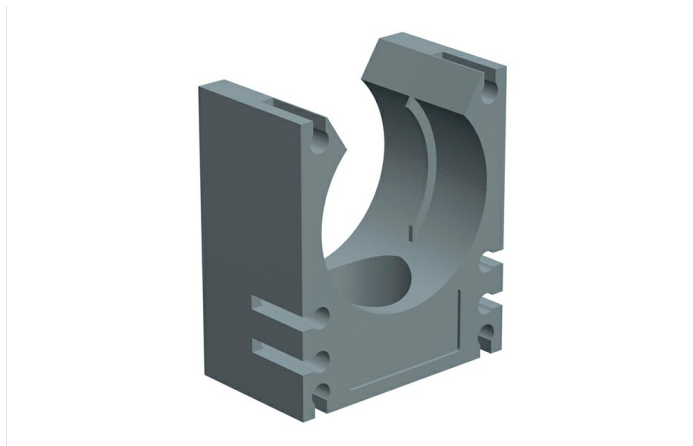


Conduits Clip



Description

Support for fixing flexible conduits from the Pemsaflex® range to the wall or channel. Made from self-extinguishing polyamide 6 in RAL 7011 grey and black RAL 9005, halogen-free, flame-retardant and available in various sizes. It allows the rotation, but not any axial movement. Easy to install using the rail clip and, by using the joint clip, several can be joined together to form blocks.

Advantages

Manufactured in polyamide 6. Self-extinguishing, halogen-free according to UNE/EN 60754-2 y UNE/EN 60754-1 and flame-retardant.

Quick connection of the tube by allowing free rotation and prevents any axial movement.

Working temperature: -25°C to + 105°C.

Easy to install using the rail clip. Several can be joined by forming blocks and using a joint clip.

CE conformity to the 2014/35 directive and the IEC 61386 standard.

Applications

Suitable for fixing Pemsaflex®, LG-PA, ST-PA, RF-PA, RB-PA and RB-PU conduits for the protection of wiring and conductors in electrical installations of machines, tools, industrial equipment, robots, vehicles and special facilities.

Solutions



Main technical characteristics

COLOUR	Grey RAL 7011, Black RAL 9005	DN	NW 7, NW10, NW12, NW14, NW17, NW23, NW29, NW36, NW48	B _{mm}	20	Ⓜ	Poyamide 6
🔥	-25 / 105 °C	🚫	LIBRE DE HALÓGENOS,NO PROPAGADOR DE LA LLAMA	ETIM	EC002320		

Product data

COLOUR	DN	L _{mm}	A _{mm}	C _{mm}	REF	kg/u	📦
Grey RAL 7011	NW 7	18	20	4.2	31095000	0.004	100
Grey RAL 7011	NW10	23	20	5.5	31095100	0.005	100
Grey RAL 7011	NW12	26	22	5.5	31095200	0.006	50
Grey RAL 7011	NW14	33	28	6.5	31095300	0.007	50
Grey RAL 7011	NW17	33	28	6.5	31095400	0.008	50
Grey RAL 7011	NW23	40	35	6.5	31095500	0.012	50
Grey RAL 7011	NW29	45	43	6.5	31095600	0.011	30
Grey RAL 7011	NW36	53	54	6.5	31095700	0.016	20
Grey RAL 7011	NW48	66	68	6.5	31095800	0.020	20
Black RAL 9005	NW 7	18	20	4.2	32095000	0.004	100
Black RAL 9005	NW10	23	20	5.5	32095100	0.005	100
Black RAL 9005	NW12	26	22	5.5	32095200	0.006	50
Black RAL 9005	NW17	33	28	6.5	32095400	0.008	50
Black RAL 9005	NW23	40	35	6.5	32095500	0.012	50
Black RAL 9005	NW29	45	43	6.5	32095600	0.011	30
Black RAL 9005	NW36	53	54	6.5	32095700	0.016	20
Black RAL 9005	NW48	66	68	6.5	32095800	0.020	20

🔒 Protection System

- CU - Copper electroplated
- PG - Pregalvanised
- EZ - Electrogalvanised
- BC - Electrogalvanised Bichromate
- BK8 - High Resistance Coating
- GC - Hot Dip Galvanising
- INOX - Stainless Steel
- PT - Polyester Paint
- AL - Aluminum
- LN - Brass or Nickel-plated brass

🔌 Insulating materials

- PC+ABS - Halogen Free Polycarbonate + ABS
- PVC - Polyvinyl Chloride
- PP - Halogen Free Polypropylene
- PA6 - Halogen Free Polyamide 6

Conduits Clip

- PA12 - Halogen Free Polyamide 12
- PU - Polyurethane
- PE - Polyethylene
- NBR - NBR rubber
- PET - Thermoplastic Polyester
- TPV - Thermoplastic

