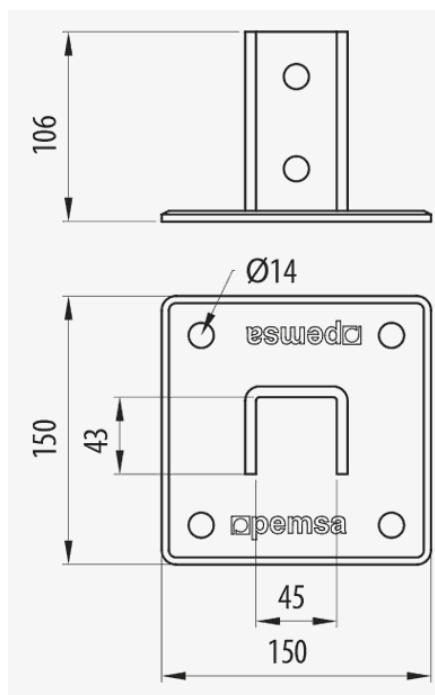
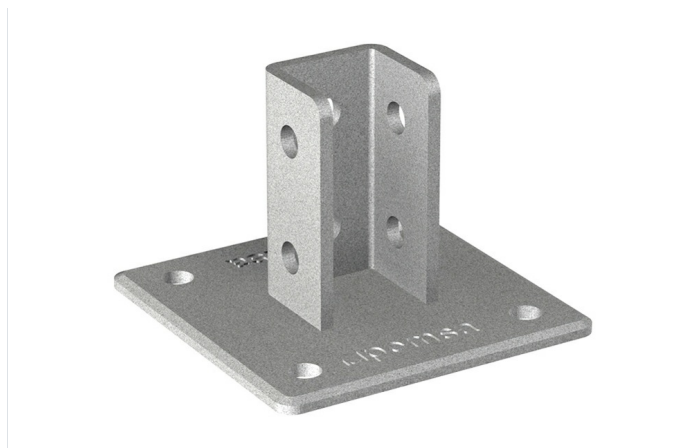


Channel Floor Boss 41x41



Description

Vertical support plate for 41x41 mm channel for the creation of support structures in tray installations. It is used as a vertical support for connecting channel to the floor or ceiling. Suitable for 41x21 mm and 41x41 mm channel. Made of steel and GC Protection System.

Advantages

It allows the connection of channels to the ceiling or floor.

Connect with 2 hexagonal bolts and M10 channel nuts.

Available for 41x21 and 41x41 channels.

CE conformity to directive 2014/35 / EU.

GC protection system (standard UNE-EN ISO 1461), suitable for outdoor installations and in aggressive environments. Corrosion resistance class 6.

Applications

Suitable for connection with 41x21 mm and 41x41 mm channels for the creation of support structures for tray installations in the conduction of electric cables and / or telecommunications in public buildings, infrastructures and civil works, industrial facilities and the tertiary sector.

Solutions



INDUSTRIA PETROQUÍMICA TUNELES. INFRAESTRUCTURAS



www.pemsa-rejiband.com

Any information included in this document is property of Pemsá®. It cannot be copied, total or partially, nor disclosed to third parties nor used without the explicit and written authorization by Pemsá®. These documents total or partially, can be subject to patent and/or be patent pending and therefore protected by intellectual and industrial property rights. Pemsá, Rejiband, Pemsaband, Inducanal, Rejitech, Megaband, Pemsaflex are registered trademarks property of "Pemsá Cable Management, S.A."



Channel Floor Boss 41x41

Main technical characteristics

ETIM
EC000482

Product data

			Ref	kg/u				
GC	Class 6	41	67030064	1.810	1	Steel with surface coating	-50 / 150 °C	A1 No combustible

Protection System

- CU - Copper electroplated
- PG - Pregalvanised
- EZ - Electrogalvanised
- BC - Electrogalvanised Bichromate
- BK8 - High Resistance Coating
- GC - Hot Dip Galvanising
- INOX - Stainless Steel
- PT - Polyester Paint
- AL - Aluminum
- LN - Brass or Nickel-plated brass

Insulating materials

- PC+ABS - Halogen Free Polycarbonate + ABS
- PVC - Polyvinyl Chloride
- PP - Halogen Free Polypropylene
- PA6 - Halogen Free Polyamide 6
- PA12 - Halogen Free Polyamide 12
- PU - Polyurethane
- PE - Polyethylene
- NBR - NBR rubber
- PET - Thermoplastic Polyester
- TPV - Thermoplastic



Channel Floor Boss 41x41

Product applications

