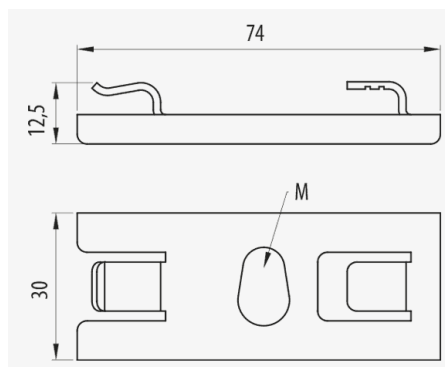
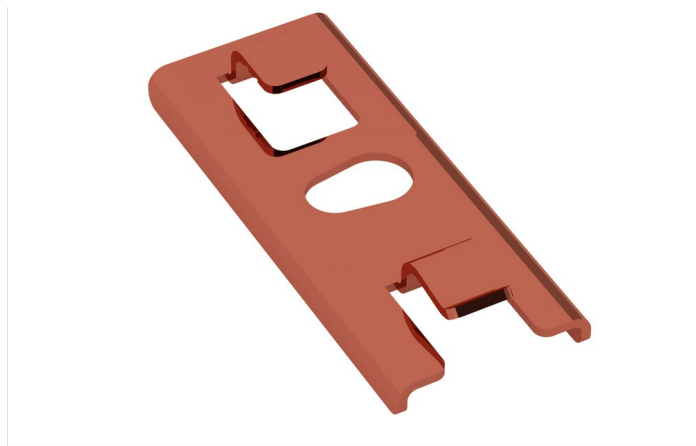


SAFECu Click Central Suspension (Ref: 82003260)

1/11



Description

Central mounting bracket, in M6, M8 and M10, for Rejiband® wire mesh tray. M10, M10, With CU protection system, CU1 finish. It allows the introduction of cables into the tray from the side and saves installation time when mounting it with a single rod and the respective nuts. Quick assembly thanks to the Click system of connection without the need of screws. Available in various Protection Systems.

Advantages

Available in various protection systems: EZ, BC, GC, high resistance BK C8 and passivated stainless steel AISI 316.

It allows the introduction of cables into the tray from the side.

Fixing by quick mount click system.

Optimisation of assembly time.

Recommended for 100, 150 and 200 mm width trays.

Applications

Suitable for the ceiling mounting of Rejiband in widths from 100 to 200 mm by means of a single rod in indoor installations in a dry atmosphere with no contaminants, exterior, industrial, marine, rural or aggressive interior installations.

Solutions




www.pemsa-rejiband.com



Any information included in this document is property of Pemsa®. It cannot be copied, total or partially, nor disclosed to third parties nor used without the explicit and written authorization by Pemsa®. These documents total or partially, can be subject to patent and/or be patent pending and therefore protected by intellectual and industrial property rights. Pemsa, Rejiband, Pemsaband, Inducanal, Rejitech, Megaband, Pemsaflex are registered trademarks property of "Pemsa Cable Management, S.A."

Product data			
Protection System		CU	
Finish		CU1, Copperplated	
Resistance Class		Class 1	
M/PG		M10	
kg/u		0.044	
u		20	
Material		Steel with surface coating	
SWL (kg)		85	
Working temperature range (°C)		-50 / 150 °C	
Fire resistance		A1 No combustible	

 **Protection System**

CU - Copper electroplated

PG - Pregalvanised

EZ - Electrogalvanised

BC - Electrogalvanised Bichromate

BK8 - High Resistance Coating


GC - Hot Dip Galvanising

INOX - Stainless Steel

PT - Polyester Paint

AL - Aluminum

LN - Brass or Nickel-plated brass

 **Insulating materials**

PC+ABS - Halogen Free Polycarbonate + ABS

PVC - Polyvinyl Chloride

PP - Halogen Free Polypropylene

PA6 - Halogen Free Polyamide 6

PA12 - Halogen Free Polyamide 12

PU - Polyurethane

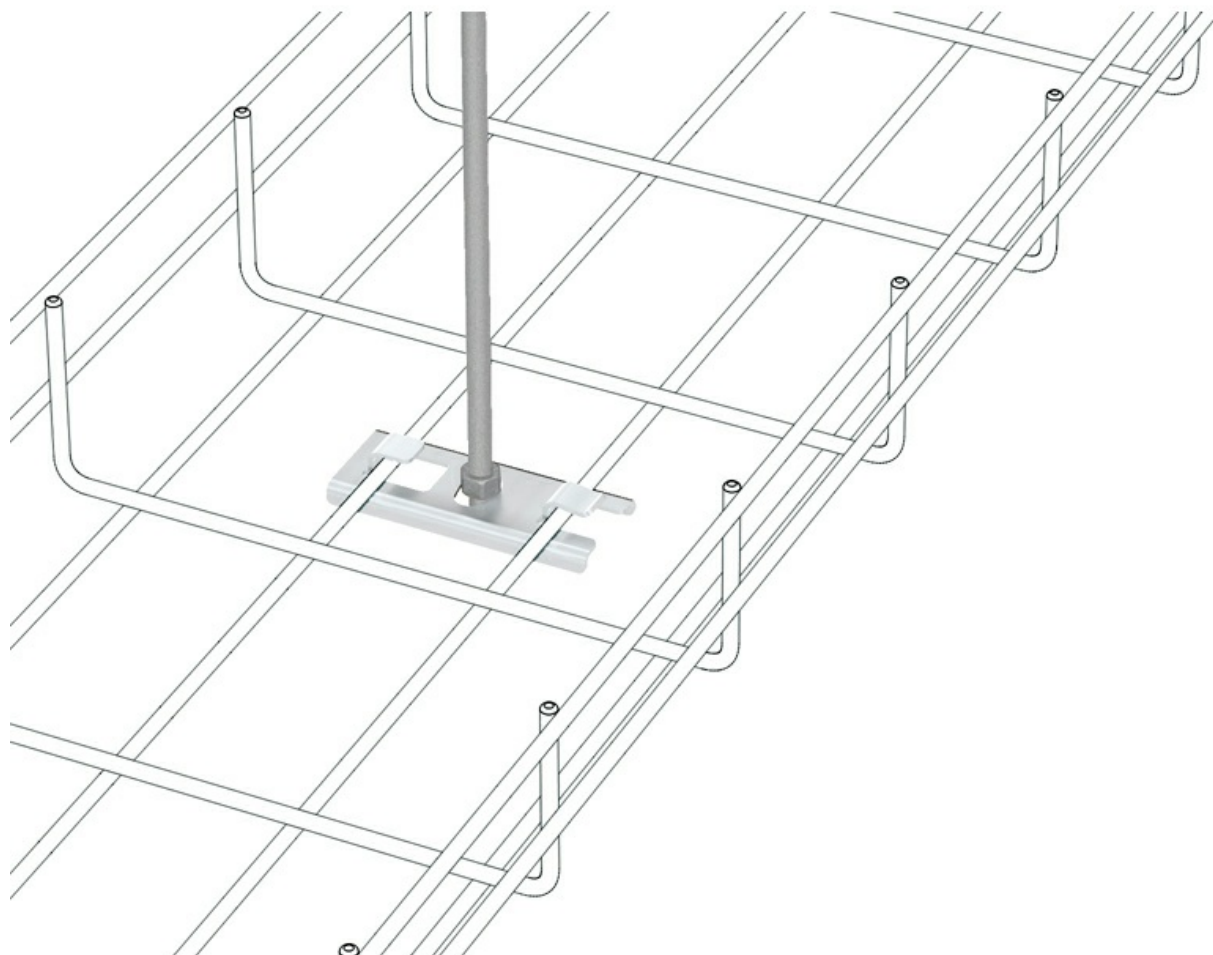
PE - Polyethylene

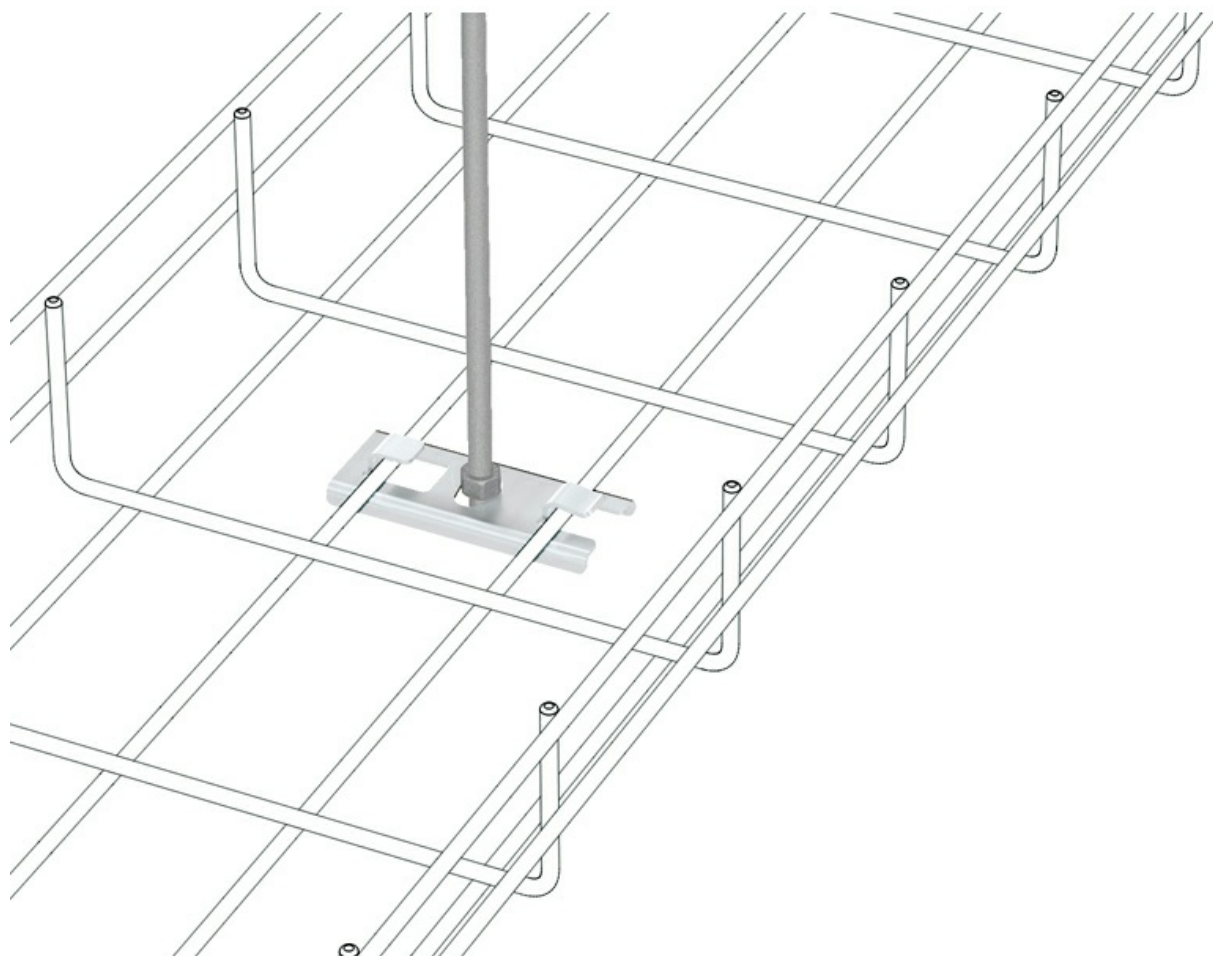
NBR - NBR rubber

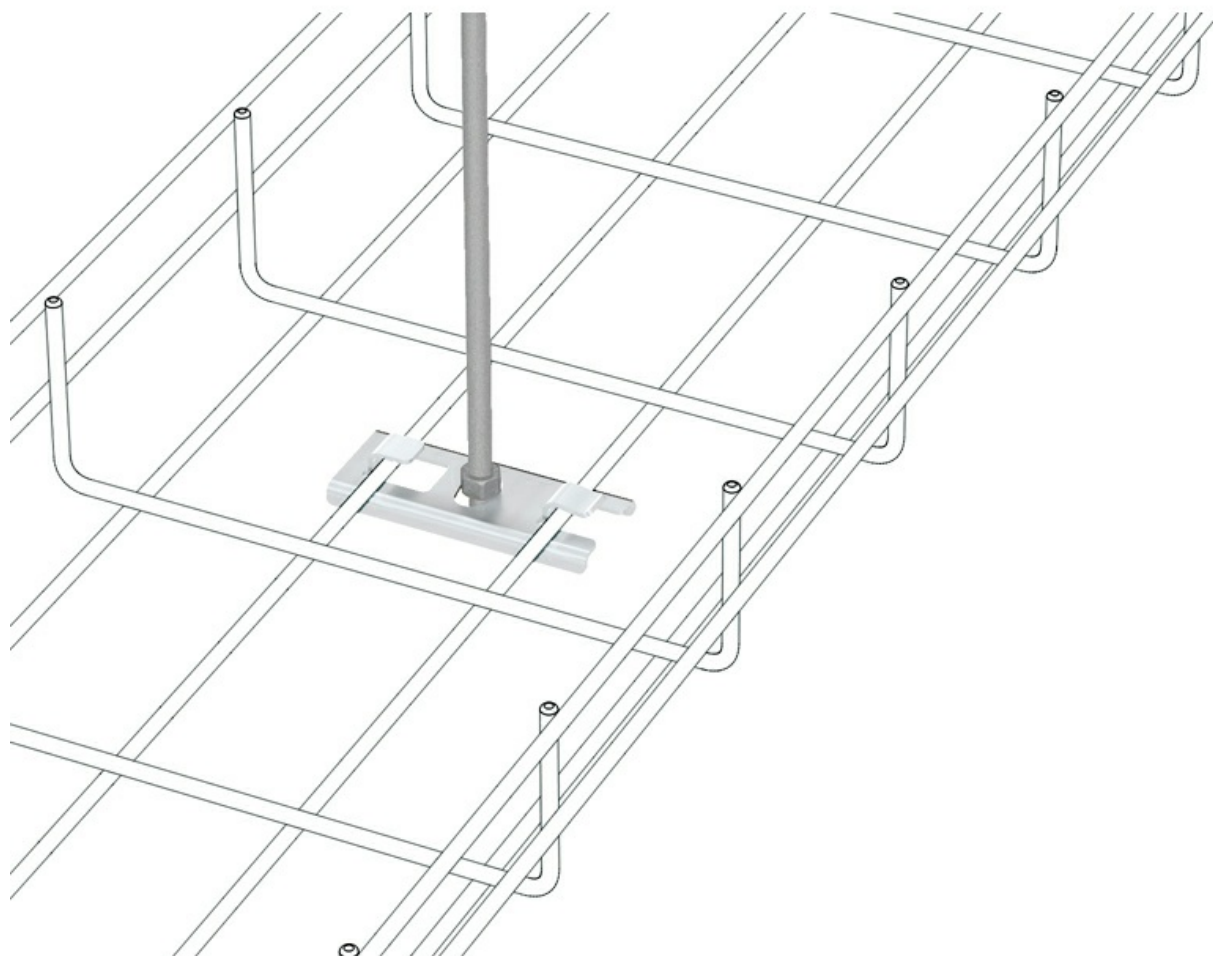
PET - Thermoplastic Polyester

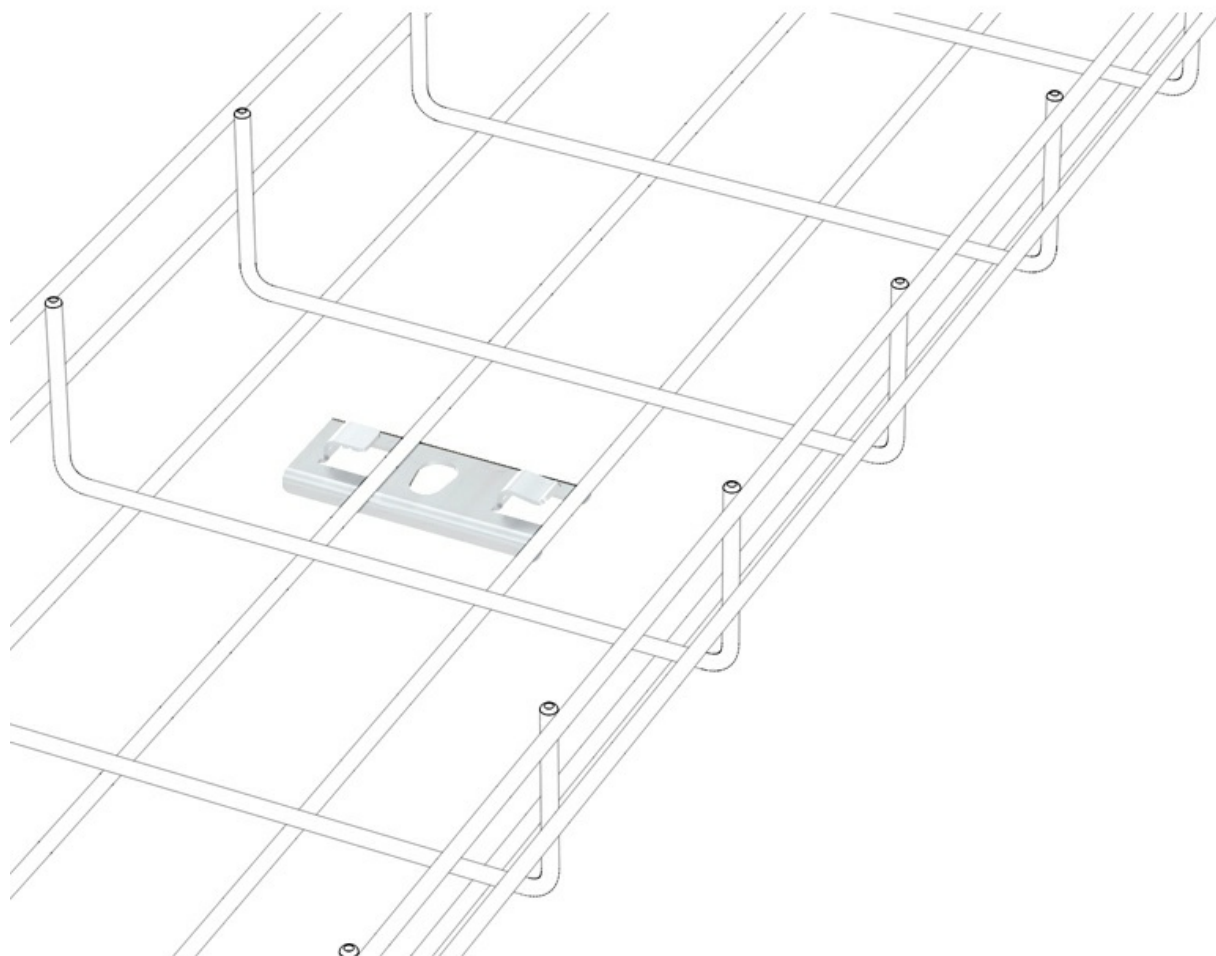
TPV - Thermoplastic

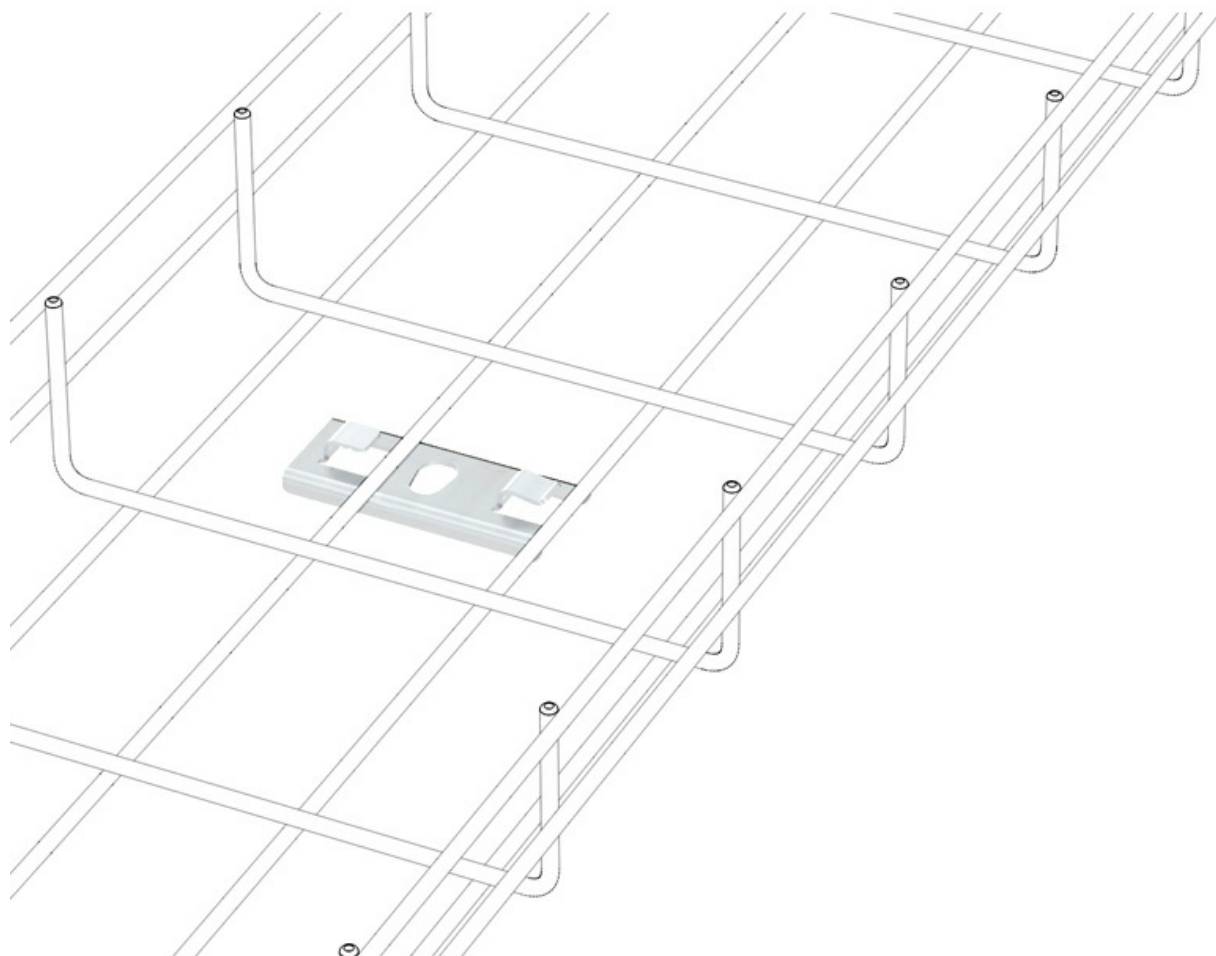
Product applications











SAFECu Click Central Suspension (Ref:

8/11

82003260)

