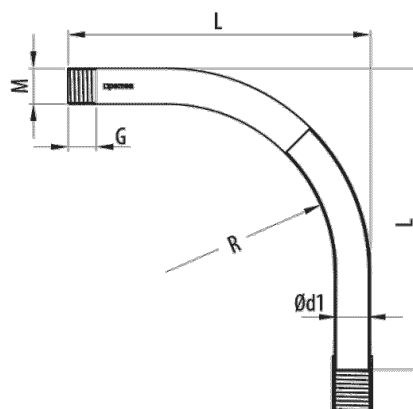


90° RR Bend (Ref: 55014040)

1/2



Description

90° threaded bend in EZ Protection System steel for the connection of RR conduits in installations that require high mechanical performance and medium resistance to corrosion. With an IP54 protection index. N mark of Aenor according to IEC 61386 standard. Available in different diameters.

Advantages

CE conformance with the directive 2014/35 and the IEC 61386 standard. N mark of Aenor according to IEC 61386.

Manufactured in PG protection system (standard EN-ISO 2081), suitable for indoor installations. Grade 2 corrosion resistance, according to IEC 61386. Medium indoor and outdoor protection.

Protection index EN 60529: IP54.

Working temperature: -45°C to + 400°C.

Threaded connection for joining RR conduits or accessories. Supplied complete with coupler.

Applications

Suitable for the creation of 90° angles in installations of RR rigid metal threaded conduits in applications of building, tertiary sector and industrial with high requirements of hygiene. Premises of public attendance and premises with risk of fire or explosion.

Solutions



www.pemsa-rejiband.com

Any information included in this document is property of Pemsa®. It cannot be copied, total or partially, nor disclosed to third parties nor used without the explicit and written authorization by Pemsa®. These documents total or partially, can be subject to patent and/or be patent pending and therefore protected by intellectual and industrial property rights. Pemsa, Rejiband, Pemsaband, Inducanal, Rejitech, Megaband, Pemsaflex are registered trademarks property of "Pemsa Cable Management, S.A."



Product data			
Protection System	EZ	kg/u	0.751
Finish	EZ2, Electrogalvanised	u	5
DN	NW40	Material	Steel with surface coating
M/PG	M40	Compression strength (N)	4000 N
G (mm)	20	Impact Strength (J)	20 J
Ø d1 (mm)	37	IP	IP54
R stat. (mm)	145	Working temperature range (°C)	-45 / 400 °C
L (mm)	287	Fire resistance	LIBRE DE HALÓGENOS,NO PROPAGADOR DE LA LLAMA

Protection System
CU - Copper electroplated
PG - Pregalvanised
EZ - Electrogalvanised
BC - Electrogalvanised Bichromate
BK8 - High Resistance Coating
GC - Hot Dip Galvanising
INOX - Stainless Steel
PT - Polyester Paint
AL - Aluminum
LN - Brass or Nickel-plated brass

Insulating materials
PC+ABS - Halogen Free Polycarbonate + ABS
PVC - Polyvinyl Chloride
PP - Halogen Free Polypropylene
PA6 - Halogen Free Polyamide 6
PA12 - Halogen Free Polyamide 12
PU - Polyurethane
PE - Polyethylene
NBR - NBR rubber
PET - Thermoplastic Polyester
TPV - Thermoplastic