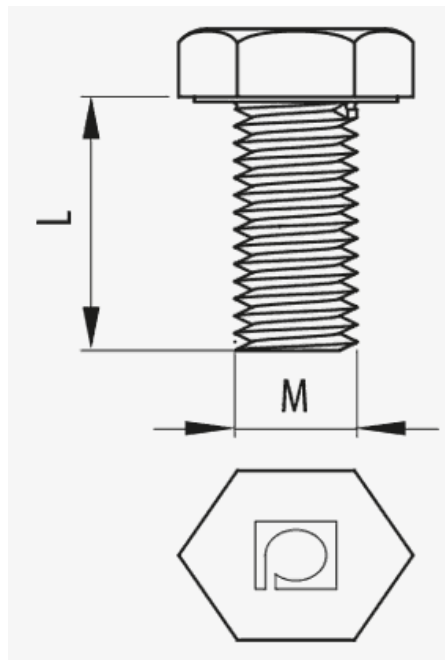
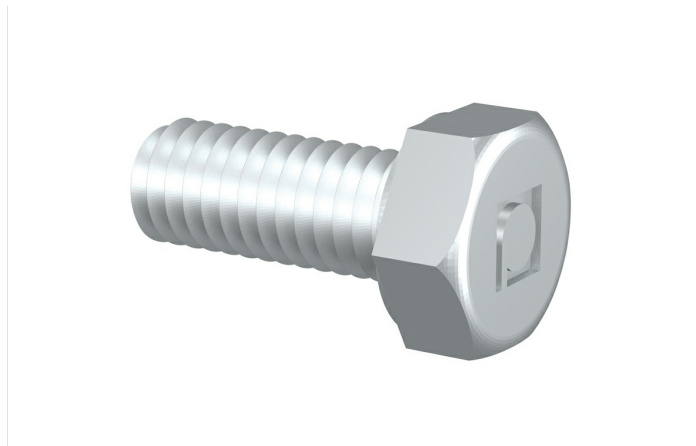


## Hexagonal Set Screw ( Ref: 67060066 )



### Description

Metal bolt with hexagonal head for fixing joints, supports and channel structures for tray installations. M 8, M 8, With INOX protection system, I316L finish. Available in M8x15, M8x20, M8x35, M8x65, M10x20, M10x35 and M10x60. Made of steel and various Protection Systems.

### Advantages

CE conformity to directive 2014/35 / EU.

Available in various sizes: M6, M8 and M10 and lengths, 15, 20, 35 and 60 mm according to the protection systems.

Available in several protection systems: EZ, GC and AISI316L stainless steel.

### Applications

Suitable for the fixing of joints, supports and channel structures in tray installations for the management of electrical cables and / or telecommunications in public buildings, infrastructures and civil works, industrial facilities and the tertiary sector.

### Solutions



Product data			
Protection System	INOX	kg/u	0.020
Finish	Stainless Steel AISI 316L	u	100
Resistance Class	Class 9D	Material	Acero inoxidable AISI 316L
M/PG	M 8	Working temperature range (°C)	-50 / 150 °C
G (mm)	35	Fire resistance	A1 No combustible

Protection System

**CU** - Copper electroplated

**PG** - Pregalvanised

**EZ** - Electrogalvanised

**BC** - Electrogalvanised Bichromate

**BK8** - High Resistance Coating

**GC** - Hot Dip Galvanising

**INOX** - Stainless Steel

**PT** - Polyester Paint

**AL** - Aluminum

**LN** - Brass or Nickel-plated brass

Insulating materials

- PC+ABS** - Halogen Free Polycarbonate + ABS
- PVC** - Polyvinyl Chloride
- PP** - Halogen Free Polypropylene
- PA6** - Halogen Free Polyamide 6
- PA12** - Halogen Free Polyamide 12
- PU** - Polyurethane
- PE** - Polyethylene
- NBR** - NBR rubber
- PET** - Thermoplastic Polyester
- TPV** - Thermoplastic